

## FROM WHERE YOU LIVE TO WHAT YOU WEAR, WE'RE RIGHT THERE WITH YOU

At Reliable, we do what we love, and we take pride in doing it right. Quality, functionality, design and customer service play an equally important part in delivering what's right for you. From irons to steam cleaners to sewing machines, you can count on us to be right there with you. That's the Reliable Way.



For more information on your product,  
to view instructional videos or to  
download the full user manual, visit  
[reliablecorporation.com](http://reliablecorporation.com)



### Having trouble? Call us.

For service and/or technical assistance  
on this product, call our toll free  
number or email our support staff

1-800-268-1649  
[support@reliablecorporation.com](mailto:support@reliablecorporation.com)

# PRONTO 200CS

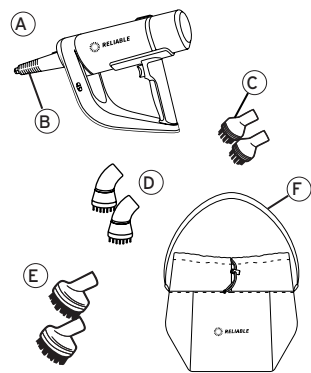


## QUICK START GUIDE



## What's Inside

- A** Pronto 200CS Body
- B** High Pressure Steam Nozzle
- C** x2 30mm Nylon Brushes
- D** x2 30mm Brass Brushes
- E** x2 60mm Nylon Brushes
- F** Accessory Storage Bag



## Using Your Pronto 200CS

- 1** Attach the high pressure steam nozzle to the front of the unit.
- 2** Push unlock button to remove water tank.



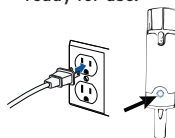
- 3** Lift open the rubber lid cap. Fill tank with 350mL of water, careful not to overfill. Close rubber cap securely to avoid any leaks.



- 4** Attach water tank back onto Pronto unit. You will hear a faint click when it is securely in place.






- 7** Plug your system into an outlet. Once plugged in, the light on the top of the unit will flash. Wait up to 30 seconds until the light turns a solid color. Once a solid color appears, the system is ready for use.



**NOTE:** As water is drawing into the unit, you will hear a chugging sound. Once the unit is fully activated, this sound will cease.

- 8** Based on your cleaning needs, either utilize the high pressured steam nozzle, or connect one of the attachments to the front of the nozzle.



ATTACHMENT	RECOMMENDED USE
 High Pressure Steam Nozzle	Ideal for most cleaning applications
 Nylon Brush	Can be used around sinks, to clean grout lines, etc
 Brass Brush	Ideal for metal safe surfaces (e.g., BBQs)

- 9** Place your Pronto 1-2 inches away from the area that you would like to clean. Push the trigger once to release steam and move the system slowly back and forth over the desired area. Do not hold down the trigger.



- 10** Adjust the steam setting from low to high based on your cleaning needs.

- 11** Push the trigger on the handle again to stop steam output. It may take a few seconds for all the steam to release.

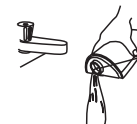


- 12** When you are finished cleaning, ensure to unplug the device.

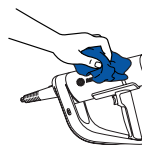


## Maintenance

- 1** Ensure that the unit is off and has cooled completely.
- 2** Empty the tank of any residual water.



- 3** Wipe surface of machine with a soft, clean cloth.
- 4** Allow time for product to dry before storing.



## Troubleshooting

### My Pronto unit keeps making a chugging sound

If your unit is making a chugging sound upon initial startup, this is the water drawing into the unit. Wait until the unit is fully activated and the chugging sound will stop. If your unit is making the chugging sound after you've already started up your unit, perhaps the water tank is close to empty. Refill your water tank before further cleaning.

### My Pronto's steam-ready light keeps flashing

If the steam-ready light on your Pronto 200CS keeps flashing, this may indicate that the unit is reheating. Wait until the unit has reheated prior to continuing your cleaning regimen.

### My Pronto is leaking water

Check the water tank cap to make sure it is secure. If not, close rubber lid securely and ensure that the surrounding area is dry. Also be sure not to overfill water tank in order to avoid leakage.

### My Pronto 200 is producing reduced/no steam

If your Pronto 200CS is not producing any steam, or producing very little, first check that your unit is on and wait until the steam-ready light is a solid color. Another possible cause is that the water tank is empty. Check your water tank level to see if the unit requires more water. Always ensure to unplug your Pronto prior to filling it with water.