



Operator & Parts Manual

Electric Automatic Floor Scrubber

Model: 18C-Z



8050906
REV.01(10-2018)



READ OPERATOR MANUAL MANUAL CAREFULLY

IMPORTANT: To ensure full warranty protection, Please fill out & return your warranty card.

Please fill out at time of installation for future reference.

Model No. _____

Serial No. _____

Machine Options _____

Sales Rep. _____

Sales Rep. phone no. _____

Customer ID Number _____

Installation Date _____

HOW TO ORDER PARTS

Only use company supplied or equivalent parts. Parts and supplies may be ordered online, by phone, by fax or by mail.

1. Identify the machine model.
2. Identify the machine serial number from the data label.
3. Ensure the proper serial number is used from the parts list.
4. Identify the part number and quantity.
Do not order by page or reference numbers.
5. Provide your name, company name, customer ID number, billing and shipping address, phone number and purchase order number.



PROTECT THE ENVIRONMENT

Please dispose of packaging materials, old machine components such as batteries, hazardous fluids, including antifreeze and oil, in an environmentally safe way according to local waste disposal regulations.

Always remember to recycle.




Specifications and parts are subject to change without notice.

TABLE OF CONTENTS


SAFETY PRECAUTIONS	4
MACHINE COMPONENTS	6
MACHINE SETUP & INSTALLATION	7
MACHINE OPERATION	8
WHILE OPERATING MACHINE	8
TANK DRAINING.	8
PREVENTATIVE MAINTENANCE.	10
BASIC TROUBLESHOOTING	11
TECHNICAL SPECIFICATION	12
PARTS LIST	13
WEAR & TEAR PARTS LIST	27
WIRING DIAGRAM	28

SAFETY PRECAUTIONS

This machine is intended for commercial use. It is designed exclusively to scrub hard floors in an indoor environment and is not constructed for any other use. Only use recommended accessories.

 **Flammable materials can cause an explosion or fire. Do not use flammable materials in tanks.**

All operators should read, understand and exercise the following safety precautions:

 **Flammable materials or reactive materials can cause explosion or fire. Do not pick them up.**

1. Do not operate machine:

- Unless trained and authorized.
- Unless you have read and understood the operator's manual.
- In flammable or explosive areas.
- If not in proper operating condition.
- In outdoor areas and standing water.

2. Before operating machine:

- Make sure all safety devices are in place and operating properly.

3. When using machine:

- Go slow on inclines and slippery surfaces.
- Follow all safety guidelines.
- Report and fix any damage to machine prior to operating it.
- Never allow children to play on or around the machine.
- Do not operate on inclines that exceed 2%(3°).

4. Before leaving or servicing machine:

- Stop on level surface.
- Turn off machine.

5. When servicing machine:

- Read operator's manual thoroughly prior to operating or servicing this machine.
- Use manufacturer supplied or approved

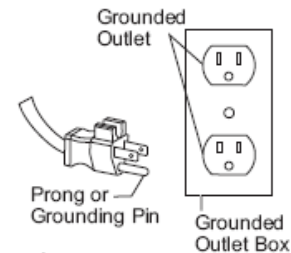
SAFETY PRECAUTIONS



**Carefully read and understand this manual before operating this machine.
This machine must be grounded!**

This scrubbing machine shall be grounded while in use to protect the operator from electric shock. Grounding provides a path of least resistance for electric current. This machine is equipped with a cord having an equipment-grounding conductor and grounding plug. The plug must be plugged into an appropriate outlet that is properly installed and grounded in accordance with all local codes and ordinances. Do not remove the ground pin under any circumstances.

This machine is for use on a nominal 110-volt circuit and has a grounding plug that resembles the plug illustrated in Figure. Make sure that the machine is connected to an outlet having the same configuration as the plug. No adapter should be used with this machine.



This machine is intended for commercial use. It is constructed for use in an indoor environment and is not intended for any other use. Use only recommended accessories.

1. Do not operate machine:
 - Unless trained and authorized.
 - In flammable or explosive areas.
 - With a damaged cord or plug
 - If not in proper operating condition.
 - Unless you have read and understood the operator's manual.
 - With the use of extension cords.
 - In outdoor areas and standing water.
2. Before operating machine:
 - Make sure all safety devices are in place and operating properly.
3. When using machine:
 - Do not run machine over cord.
 - Do not pull cord around sharp edges or corners.
 - Do not handle plug with wet hands.
 - Report machine damage or fault operation immediately.
 - Do not pull machine by cord or plug.
 - Do not unplug by pulling on the cord.
 - Do not stretch cord.
 - Keep cord away from heated surfaces.
4. Before leaving or servicing machine:
 - Turn off machine.
 - Unplug cord from outlet.
5. When servicing machine:
 - Unplug cord from outlet.
 - Use manufacturer supplied or approved replacement parts.



To avoid electrical shock, please replace the power cord immediately if any damage is being detected. The replacement must be performed only by an authorized person or by our customer service center.



Flammable materials can cause explosion or fire. Do not use flammable materials in tanks or pick them up.

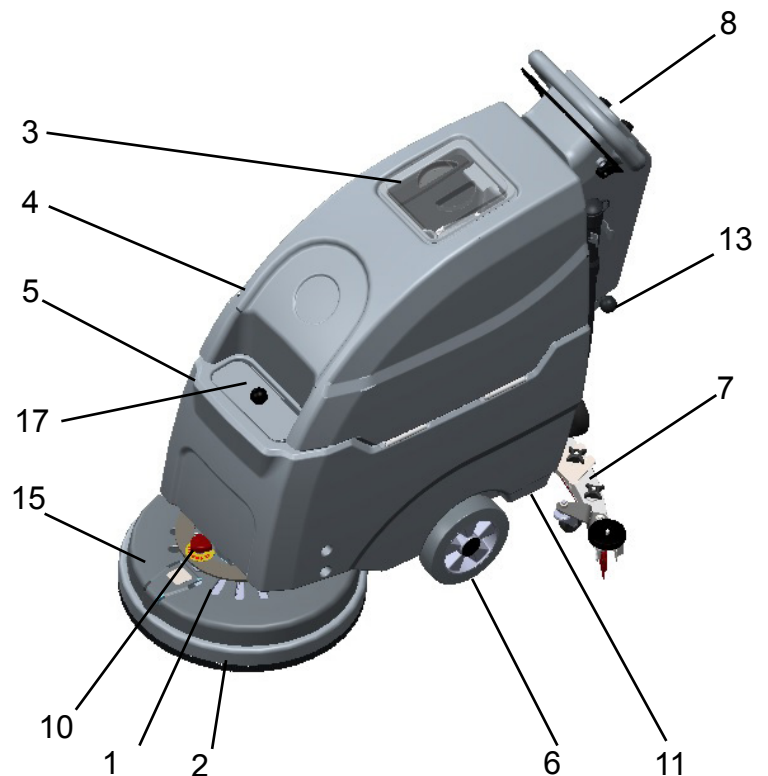
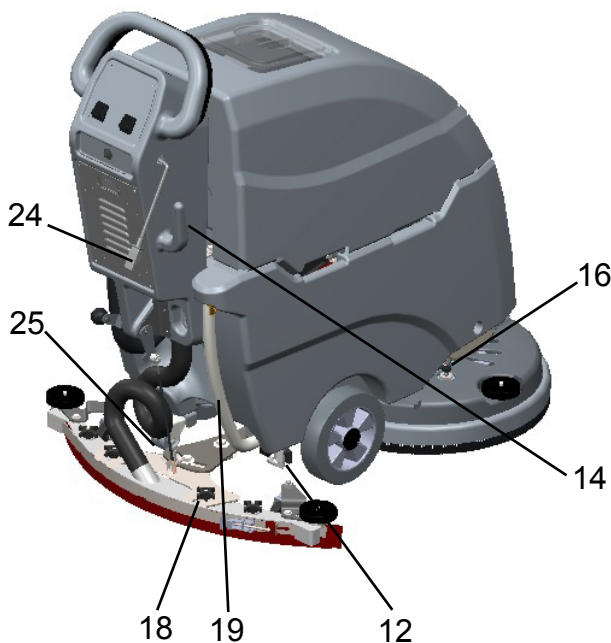
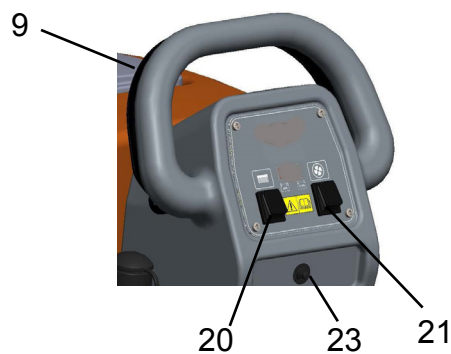
MACHINE COMPONENTS

Machine Structure

1. Brush cover
4. Recovery tank
7. Squeegee
10. Adjusting handle
13. Squeegee lifting handle
16. Brush plunger
19. Clear tube
23. Circuit breaker

2. Brush
5. Solution tank
8. Control box
11. Water filter
14. Power cord hook
17. Solution tank fill-port
20. Switch for brush motor
24. Power cord

3. Cover tank
6. 8" wheels
9. Trigger
12. Ball valve
15. Brush/pad driving hub
18. Knob
21. Switch for vacuum motor
25. Support wheel



MACHINE SET UP & INSTALLATION

UNPACK MACHINE:

Be sure and check packing carton for any damage. Immediately report any damage to carrier. Be careful not to let machine vibrate while carrying, Check contents of package to ensure that the following items are included: Machine, squeegee assembly, brush/pad driver.

MACHINE SET UP & PRE-OPERATION CHECKS:

- 1) Sweep the outside of the machine.
- 2) Check that squeegee and brush / pad is properly installed.
- 3) The forward speed of machine can be controlled by turning the handle(10). Turn the handle clockwise to speed up machine. or turn the handle anticlockwise to slow down machine.
- 4) Make sure the working surface can support the machine weight, the gradient of the floor can't exceed the limit that machine allowed(2%).

INSTALLING PAD DRIVER OR BRUSH:

- 1) Turn off machine.
- 2) Tilt the machine backwards, line up the driving hub with the hole of brush or pad driver, make sure the three blocks are fitted into the three slots of the drive hub.
*If a pad driver is being used, the appropriate pad should be attached to the pad driver first.
- 3) Push the plunger which on the brush cover to prevent the driving hub from rotating, then spin the brush/pad clockwise with your another hand till the clip clamp the block on the brush/pad.

INSTALLING THE SQUEEGEE:

- 1) Loosen the two knobs(18) on the squeegee and slide the squeegee into the slots at the rear of the squeegee bracket. (the wheels on the squeegee point to the machine.)
- 2) Tighten the knobs securely.

FILLING THE SOLUTION TANK:

- 1) The fill port is located at the rear of machine, pull the plug out of the hole.
- 2) Fill solution tank with water. (use a hose which link to a water faucet, water temperature should not exceed 50° C) The clear tube(19) in the back right of the machine has gallon markers to help determine the water level in the solution tank(5).
*Depending on the dirty level of the ground, add the proper amount of detergent into the solution tank.



Do not put any flammable materials into solution tank. This can cause an explosion or a fire. Only use recommended cleaning chemicals. Contact your janitorial supply distributor for recommendations on proper chemicals.

MACHINE OPERATION



Do not operate machine unless you have read and understand this manual.

- 1) Lower squeegee assembly to the floor by spin the squeegee lifting handle(13).
- 2) Turn brush motor switch(20) to “on” position.
- 3) Turn vacuum motor switch(21) to “on” position.
- 4) Rotate the ball valve(12) handle to vertical position. Solution will not begin to flow until the operating triggers (9) are pulled.
- 5) To begin scrubbing, pull on the blue operating trigger(9), when this triggers is pulled, the pad driver will begin to spin and the solution will begin to flow.
- 6) Begin scrubbing by moving the machine forward



Do not keep the machine in the same position with the pad / brush spinning, or you might damage the floor.

- 7) Adjust solution flow by adjusting the position of ball valve knob.

WHILE OPERATING MACHINE

- 1) Occasionally open the cover tank(3) to see if there is any foam build-up. If excessive foam is found, add defoamer to the recovery tank.



Foam must not enter the float shut-off screen, or damage can occur to the vacuum motor. Foam will not activate the machine's float shut-off device.

- 2) Occasionally view the clear tube at the back left of the machine to check the amount of cleaning solution that is left in the machine.

If the squeegee assembly leaves streaks on the floor, raise the squeegee off the floor and wipe the blades down with a damp cloth.



Do not use your fingers to wipe or remove debris from the blades, as injury may occur.

When the solution tank runs empty, turn off the brush switch and ball valve of solution tank. Keep the squeegee down and continue to vacuum until all the dirty water is picked up.

TANK DRAINING

- 1) Turn the switches on the control panel to “off ” position.
- 2) Raise the squeegee, transport machine to approved area for draining tank(s).



Any time scrubbing is completed, or when refilling solution tank, the recovery tank should be drained and cleaned.



If the recovery tank is not drained when the solution tank has been refilled, foam or water may enter the float shut-off mechanism and cause damage to the vacuum motor.

DRAINING THE RECOVERY (DIRTY) TANK

- 1) Remove the drain hose from the holder, and place the drain hose over the floor drain. Twist off the drain hose plug to begin the draining process.
- 2) Clean the recovery tank after every use. Use a fresh water hose to rinse out the recovery tank. Be careful not to spray water into the float shut-off mechanism.



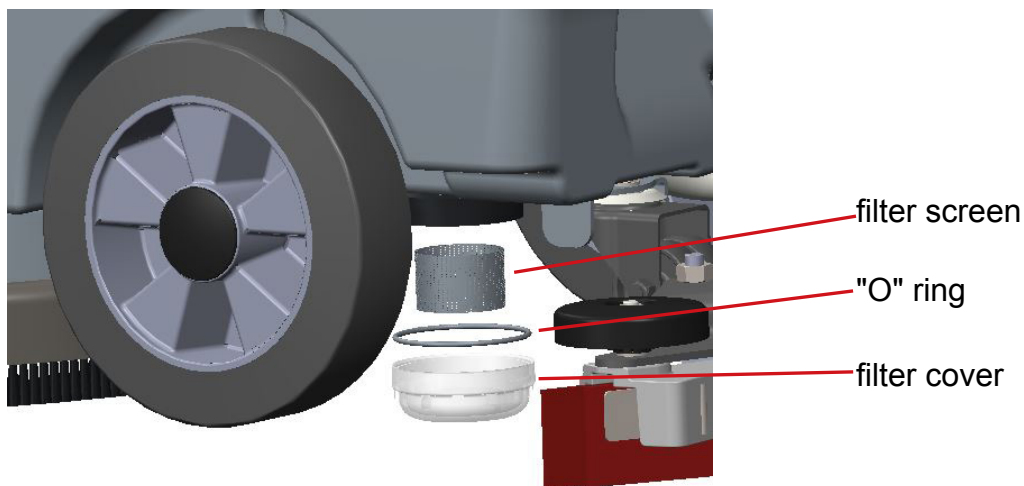
If you are storing the machine for any period of time, keep the cover tank open so the tank can dry completely and smell fresh.

DRAINING THE SOLUTION (CLEAN) TANK



Any time scrubbing operation is completed, the solution tank should be drained and cleaned.

- 1) Pull down on the clear tube (back left of the machine) to remove it from the hose barb. This will allow the solution to flow freely into a bucket or floor drain.
- 2) Rinse the solution tank with clean water after every use. This will help prevent chemical buildup and clogging of the solution lines.
- 3) Once tank is rinsed, flushed and drained, reconnect the clear tube to the hose barb. Be sure the tube is pushed all the way up on the hose barb.
- 4) Screw off the cover of the water filter(11) to completely exhaust the tank and check the filter screen, clean it up if necessary.
- 5) Screw up the cover of the water filter(11), but sure to install the screen and the "O" ring in the correct position.



PREVENTATIVE MAINTENANCE



WARNING: Before performing any maintenance on the machine, be sure that the power is turned off, or the batteries are disconnected!



WARNING: Repairs are to be completed by authorized service centers only. Any repairs completed by unauthorized persons will void the warranty.

DAILY MAINTENANCE

- 1) Remove pad driver / brush and clean with approved cleaner.
- 2) Drain recovery and solution tanks completely and rinse out with clean water. Visually check the recovery tank for debris and clean out as necessary.
- 3) Raise squeegee assembly off floor and wipe it down with a damp towel. Be sure to store the squeegee in the up position.
- 4) Remove the float shut-off assembly and rinse it out with clean water.
- 5) Clean machine with an approved cleaner and a damp towel. Don't spray water to clean the outside of machine to avoid damage to motor and wiring.
- 6) Unplug vacuum motor from power source and hose cuff & remove the drain hose from the holder prior to removing the recovery tank when performing maintenance.
- 7) Check the condition of the squeegee blade wiping edge, rotate blade or replace it if worn.

MONTHLY MAINTENANCE

- 1) Inspect and clean the recovery tank cover seal. Replace it if damaged.
- 2) Lubricate all grease points and pivot points with silicon spray and approved grease.
- 3) Check the machine for loose nuts and bolts.
- 4) Check the machine for leaks.

MOTOR MAINTENANCE

- 1) Contact your local Distributor for any motor maintenance.
- 2) Check the motor brushes every 250 hours, Replace the brushes when they are worn to a length of 10mm or less.

MACHINE STORAGE

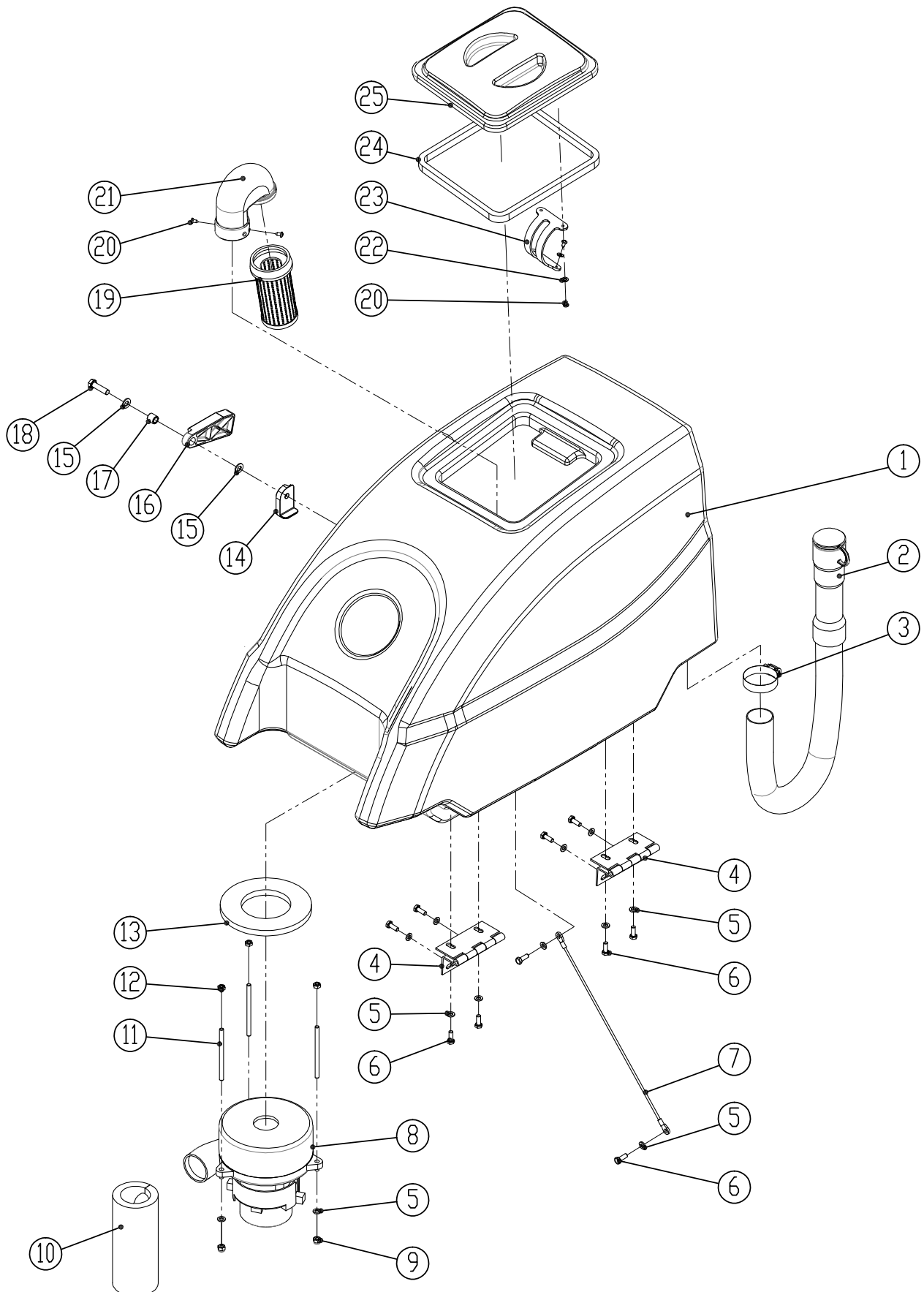
- 1) Always store the machine indoors and in its upright position.
- 2) Always store the machine in a dry area.
- 3) Always take off the pad driver / brush before storage.
- 4) Always store the machine with the squeegee assembly raised off the floor.
- 5) If storing in an area which may reach freezing temperatures, be sure to drain all fluids from the machine prior to storage(include the filter). Any damage caused by freezing temperatures will not be covered by the warranty.
- 6) Drain the recovery tank and keep the cover tank open so that it can "breathe" during storage.
- 7) Drain the solution tank of all fluid.

BASIC TROUBLESHOOTING

PROBLEM	CAUSE	SOLUTION
No Power	The wiring not connected correctly or bad wiring	Check the wiring or contact Distributor
	Bad brush motor	Contact Distributor
	Carbon brushes worn out	Contact Distributor
Vacuum motor does not run	The wiring not connected correctly or bad wiring	Check the wiring or contact Distributor
	Bad vacuum motor	Contact Distributor
	Carbon brushes worn out	Contact Distributor
Little or no solution flow	Bad ball valve	Contact Distributor
	Bad solution valve	Contact Distributor
	Ball valve position in need of adjustment	When ball valve is in horizontal position, the amount of solution flow is maximum.
Poor water pick up	Squeegee clogged	Clean debris off squeegee with a damp towel
	Squeegee blades worn	Install new squeegee blades
	Squeegee not mounted correctly	Confirm that the squeegee assembly is securely fastened to the machine and not loose fitting.
	Vacuum hoses have a hole or are loose	Check hose connections and make sure they are firm. Replace hose if damaged.
	Vacuum hose may be clogged	Check hose for debris and remove any clog.
	Drain hose stopper is loose	Tighten drain plug.
	Vacuum motor is loose	Tighten vac motor mounting screws. Do not over tighten or damage will occur.
	cover tank is loose	Confirm the cover tank is securely in its place.
	Recovery tank is full	Drain recovery tank
	Float shut off is clogged	Remove float shut off from inside recovery tank and remove any debris

TECHNICAL SPECIFICATION

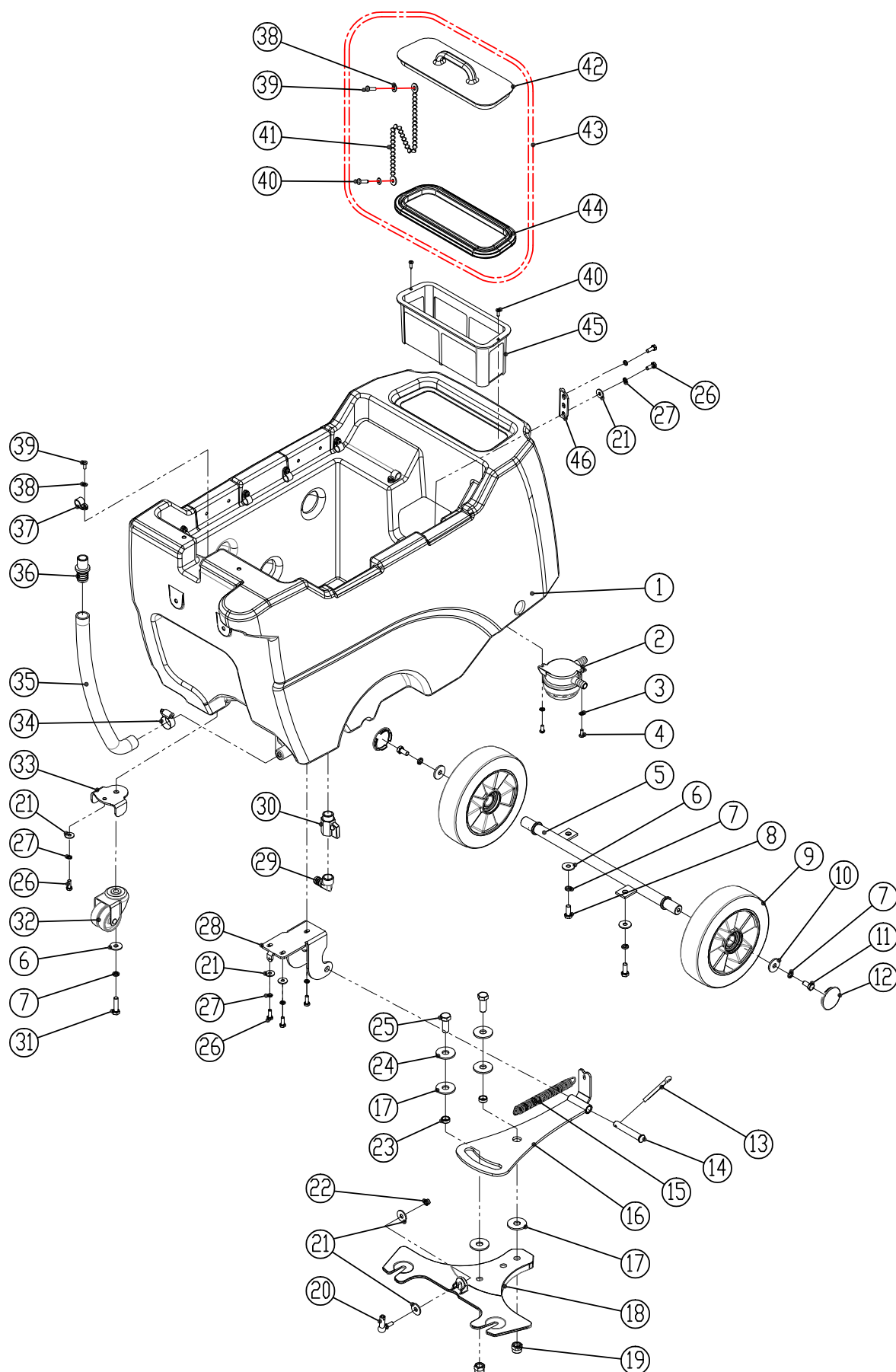
ITEM	PARAMETER
Working Width	18in / 450mm
Squeegee Width	30in / 762mm
Productivity rate	12915 ft ² h / 1200m ² h
Brush Dia.	18in / 450mm
Brush Speed	180rpm
Max Pad Pressure	55lbs / 25kg
Voltage	120VAC
Brush Motor	0.75hp / 550W
Vacuum Motor	0.7hp / 500W
Solution Tank Capacity	10Gal / 40L
Recovery Tank Capacity	13Gal / 50L
Machine Weight (w/o batteries)	138lbs / 62.5kg
Machine Length	43.4in / 1152mm
Machine Height	42.5 in / 1080mm
Machine Width	20.5in / 520mm
Power cord Length	82ft / 25m
Max Gradient	2%
Type of Drive	Brush assisted
Noise Level	70 dB
Working Vacuum	155 mbar

RECOVERY TANK GROUP

RECOVERY TANK ASSEMBLY

DIA NO	PART NUMBER	DESCRIPTION	NO REQ'D
1	8050201-GY	RECOVERY TANK	1
2	8131010	DRAIN HOSE	1
3	1962050	CLAMP	1
4	8111300	HINGE ASSEMBLY	2
5	1421612	FLAT WASHER M6×DIA12×1.6	12
6	1021616	HEX HEAD BOLT M6×16	10
7	8131020	CABLE	1
8	8011200	VACUUM MOTOR, 120V, 2-STAGE, KIT	1
9	1123608	LOCK NUT, M6	3
10	8011007	MUFFLER	1
11	8112006	STUD, M6×92	3
12	1121605	NUT, M6	3
13	8112005	GASKET, VACUUM MOTOR	1
14	8111008	BRACKET	1
15	1421824	FLAT WASHER M8×DIA24×2.0	2
16	8111007	RECOVERY TANK SUPPORT	1
17	8115404	SLEEVE, P/M	1
18	1021830	HEX HEAD BOLT M8×30	1
19	8111015	FLOAT, SHUT-OFF	1
20	1321210	SCREW, SELF-TAPPING, ST4×10	6
21	2320220	ELBOW	1
22	1421409	FLAT WASHER M4×DIA9×0.8	4
23	2320217	RUBBER HINGE	1
24	8050152	GASKET	1
25	2320216	COVER, CLEAR	1

SOLUTION TANK ASSEMBLY

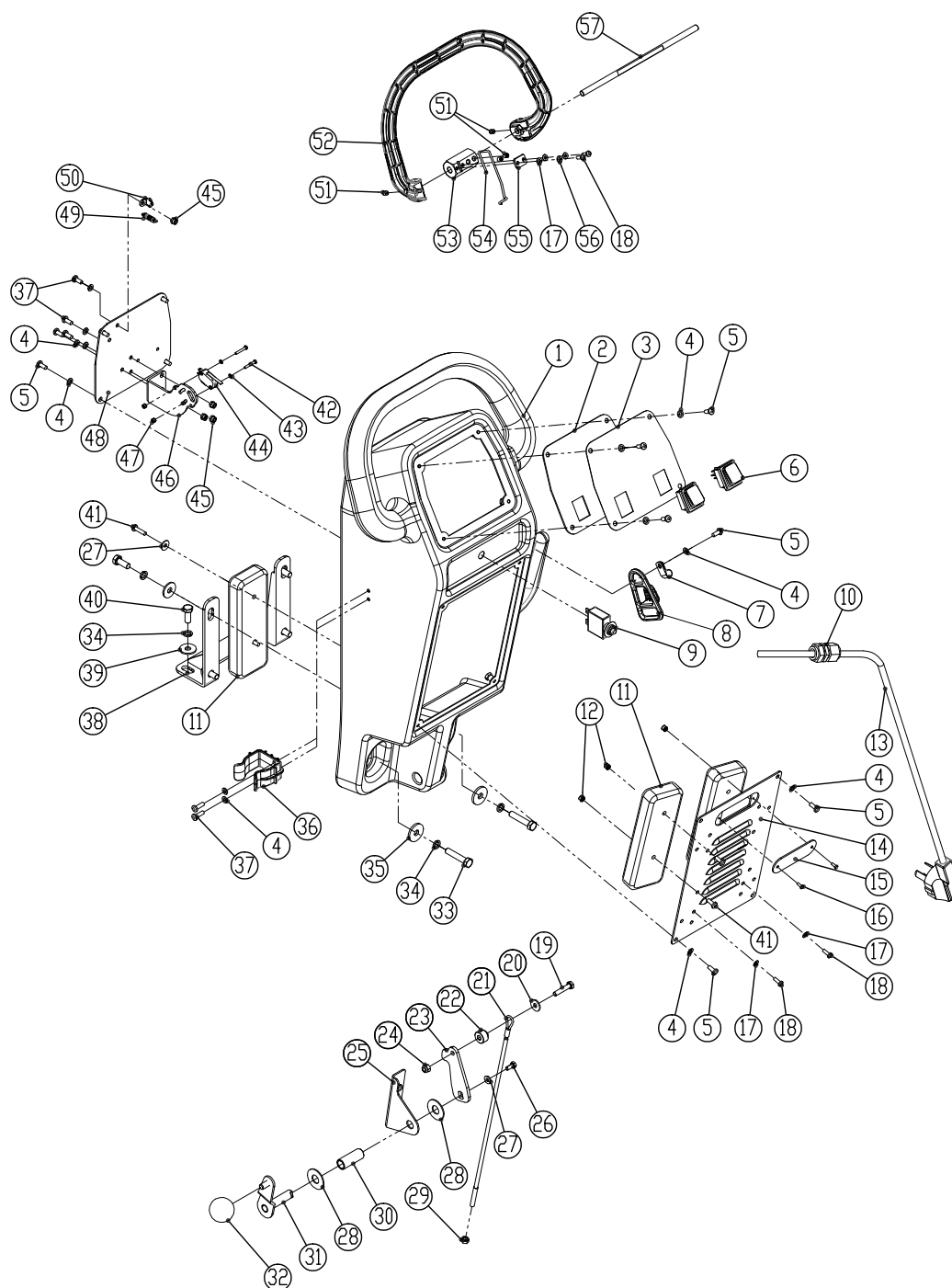


SOLUTION TANK ASSEMBLY

DIA NO	PART NUMBER	DESCRIPTION	NO REQ'D
1	8050101	SOLUTION TANK	1
2	8119100	FILTER ASSEMBLY	1
3	1421409	FLAT WASHER M4×DIA9×0.8	2
4	1221412	PAN HEAD SCREW M4×12	2
5	8016010	WHEEL SHAFT	1
6	1421824	FLAT WASHER M8×DIA24×2.0	3
7	1422821	LOCK WASHER, M8	5
8	1021820	HEX BOLT, M8×20	2
9	8115200	WHEEL, 8 INCH	2
10	1421828	FLAT WASHER M8×DIA28×2.0	3
11	1021816	HEX BOLT, M8×16	2
12	8115206	WHEEL CAP	2
13	1645324	COTTER PIN	1
14	8037015	PIN DIA12×70	1
15	8115004	SPRING	1
16	8037010	BRACKET, SQUEEGEE	1
17	8135001	PLASTIC WASHER, M8×DIA30×1.5	4
18	8115001	SQUEEGEE SUPPORT	1
19	1123115	LOCK NUT, M12	2
20	8114511	JOINT BEARING	1
21	1421618	FLAT WASHER M6×DIA18×1.6	8
22	1123608	LOCK NUT, M6	1
23	8115405	SLEEVEE, P/M	2
24	1421132	FLAT WASHER M12×DIA32×2.0	2
25	1021230	HEX BOLT, M12×30	2
26	1021616	HEX BOLT, M6×16	6
27	1422616	LOCK WASHER, M6	6
28	8037020	BRACKET, SQUEEGEE	1
29	8119007	ELBOW, G1/2	1
30	8119005	BALL VALVE, G1/2	1
31	1021830	HEX BOLT, M8×30	1
32	8013016	2 INCH CASTER	1
33	8034012	BRACKET, CASTER	1
34	1962025	CLAMP, 16-25MM	1
35	8050105	CLEAR TUBING	1
36	8050130	CONNECTOR	1

SOLUTION TANK ASSEMBLY

DIA NO	PART NUMBER	DESCRIPTION	NO REQ'D
37	8113009	NYLON, CLAMP	7
38	1421510	FLAT WASHER M5×DIA10×1	10
39	1221512	PAN HEAD SCREW M5×12	8
40	1321310	SCREW, SELF-TAPPING, ST4.8×9.5	3
41	8050153	CHAIN	1
42	8050156	LID, SOLUTION TANK FILL PORT	1
43	8050150-BK	LID, KIT	1
44	8050152	SEAL	1
45	6210107	FILTER	1
46	8013002	BRACKET	1

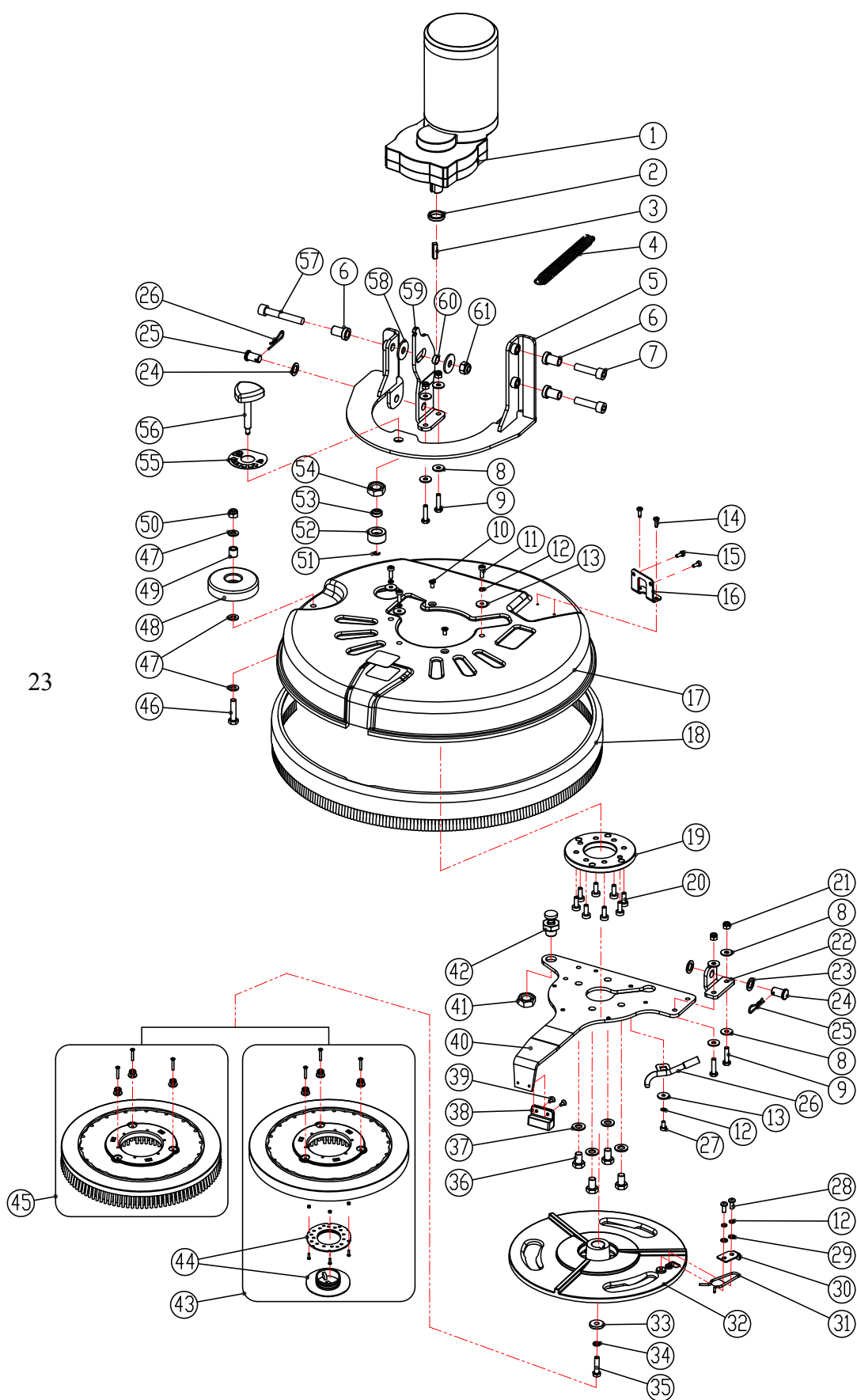
CONTROL BOX ASSEMBLY**CONTROL BOX ASSEMBLY**

DIA NO	PART NUMBER	DESCRIPTION	NO REQ'D
1	8050401	CONTROL CONSOLE HOUSING	1
2	8014005	PLATE, CONTROL PANEL	1
3	8014015	CONTROL PANEL DECAL	1
4	1421510	FLAT WASHER M5×DIA10×1.0	16
5	1221512	PAN HEAD SCREW M5×12	9
6	8014006	ROCKER SWITCH	2
7	8014041	CLAMP	1

PARTS LIST

DIA NO	PART NUMBER	DESCRIPTION	NO REQ'D
8	8014043	BUFFER	1
9	8114703	CIRCUIT BREAKER, 35A	1
10	2320403	CABLE GLAND	1
11	8034013	WEIGHT	3
12	1123406	LOCK NUT, M4	6
13	8014053	POWER CORD	1
14	8134060	PLATE, BATTERY CHARGER	1
15	8134061	CLEAR COVER	1
16	1221306	PAN HEAD SCREW M3×6	2
17	1421409	FLAT WASHER M4×DIA9×0.8	6
18	1221412	PAN HEAD SCREW M4×12	6
19	1021630	HEX HEAD BOLT M6×30, SS	1
20	1421618	FLAT WASHER M6×DIA18×1.6	1
21	8050410	CABLE, SQUEEGEE LIFT	1
22	8014101	LIFTING ROPE SPACER	1
23	8034011	BAFFLE	1
24	1123608	LOCK NUT M6	1
25	8134501	BRACKET	1
26	1021512	HEX HEAD BOLT M5×12,SS	1
27	1421515	FLAT WASHER M5×DIA15×1.0	3
28	1421132	FLAT WASHER M12×DIA32×1.5	2
29	1121605	HEX NUT M6	1
30	8134081	SLEEVE	1
31	8134080	SQUEEGEE LIFTING HANDLE	1
32	8113104	BALL KNOB M8	1
33	1021840	HEX HEAD BOLT M8×40, SS	2
34	1422821	LOCK WASHER M8	8
35	1421828	FLAT WASHER M8×DIA28×3	2
36	6210111	CLAMP, DRAIN HOSE	1
37	1221516	PH SCREW M5×16	7
38	8114030	BRACKET, CONTROL CONSOLE	1
39	1421824	FLAT WASHER M8×DIA24×2	6
40	1021820	HEX BOLT M8×20	6
41	1221520	PH SCREW M5×20	2
42	1021320	SCREW M3×20	2
43	1434300	LOCK WASHER, TOOTH, M3	2
44	8114712	MICRO SWITCH	1
45	1123507	LOCK NUT M5	5
46	8014061	BRACKET, MICRO SWITCH	1
47	1123305	LOCK NUT M3	2
48	8014062	BRACKET, REAR PANEL	1
49	8014035	SPRING	1
50	8014034	BRACKET, SPRING	1
51	1534608	SET SCREW M6×8	4
52	8024022	TRIGGER	1
53	8014031	BUSHING, HEX	1
54	8014032	SPRING ROD	1
55	8014033	PLATE	1
56	1422411	LOCK WASHER, M4	2
57	8114101	SHAFT	1

BRUSH ASSEMBLY

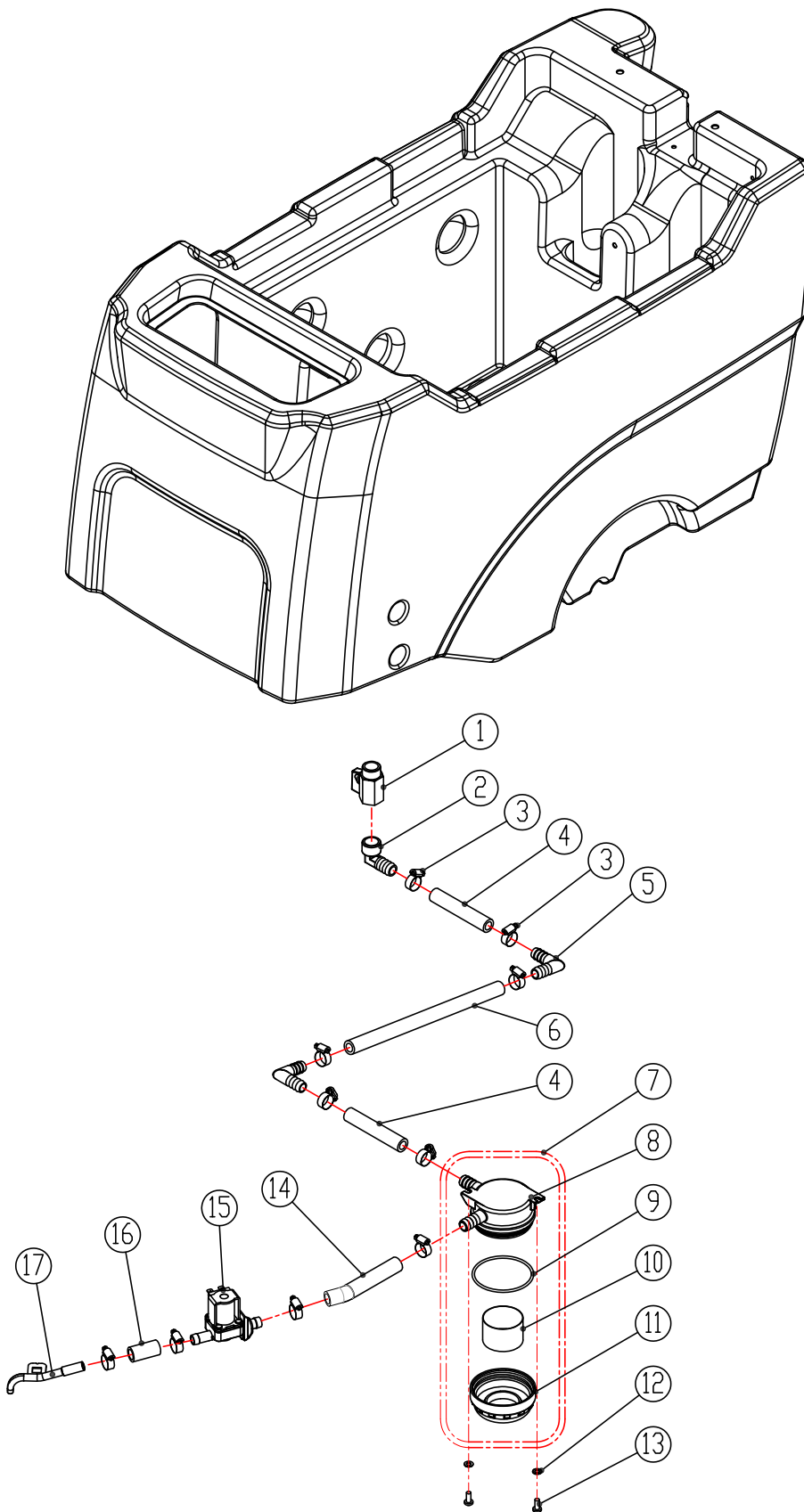


BRUSH ASSEMBLY

DIA NO	PART NUMBER	DESCRIPTION	NO REQ'D
1	8015220	MOTOR 120V 550W, KIT	1
2	8015003	SPACER	1
3	1656432	KEY	1
4	8115004	SPRING	1
5	8015010	BRACKET, SCRUB HEAD	1
6	8015007	BUSHING	3
7	1511040	SOCKET SCREW, DIA10×40	2
8	1421618	FLAT WASHER M6×DIA18×1.6	8
9	1021625	HEX HEAD BOLT, M6×25	4
10	1222510	SH SCREW, M5×10	2
11	1221516	PAN HEAD SCREW M5×16	3
12	1422513	LOCK WASHER, M5	6
13	1421518	FLAT WASHER M5×DIA18× 2.0	4
14	1321213	SELF-TAPPING SCREW, ST4.2×13	2
15	1221410	PAN HEAD SCREW, M4×10	2
16	8015103	BRACKET, SOLENOID VALVE	1
17	8015005	COVER, SCRUB HEAD	1
18	8015090	SPLASH GUARD, SCRUB HEAD	1
19	8015087	SPACER	1
20	1221616	PAN HEAD SCREW, M6×16	8
21	1123608	LOCK NUT M6	4
22	8015001	BRACKET	1
23	8015116	NYLON WASHER DIA12.5× 20×1.5	4
24	1644220	PIN DIA12×20	2
25	1646240	COTTER PIN 2×40	2
26	8015060	INLET	1
27	1221510	PAN HEAD SCREW M5×10	1
28	1221512	PAN HEAD SCREW M5×12	2
29	1421510	FLAT WASHER M5×DIA10×1.0	2
30	8116002	PLATE, BRUSH CLAMP	1
31	8116003	SPRING CLIP	1
32	8116008	HUB, DRIVE, 3-LUG	1
33	8116010	FLAT WASHER DIA8.5×DIA25.4×4.5	1
34	1422821	LOCK WASHER, M8	1
35	1023815	HEX BOLT, 5/16-18×1.5" UNC	1
36	1011016	HEX BOLT, M10×16	4
37	1421020	FLAT WASHER M10×DIA20×2.0	4
38	8015108	SUPPORT	1
39	1212410	SH SCREW M4×10	2
40	8015041	BRACKET, BRUSH MOTOR	1
41	1111215	HEX NUT, M16	1
42	8015050	BRUSH PLUNGER	1
43	9040017	PAD HOLDER, 17 INCH	1
44	9000001	BIG MOUTH	1

BRUSH ASSEMBLY

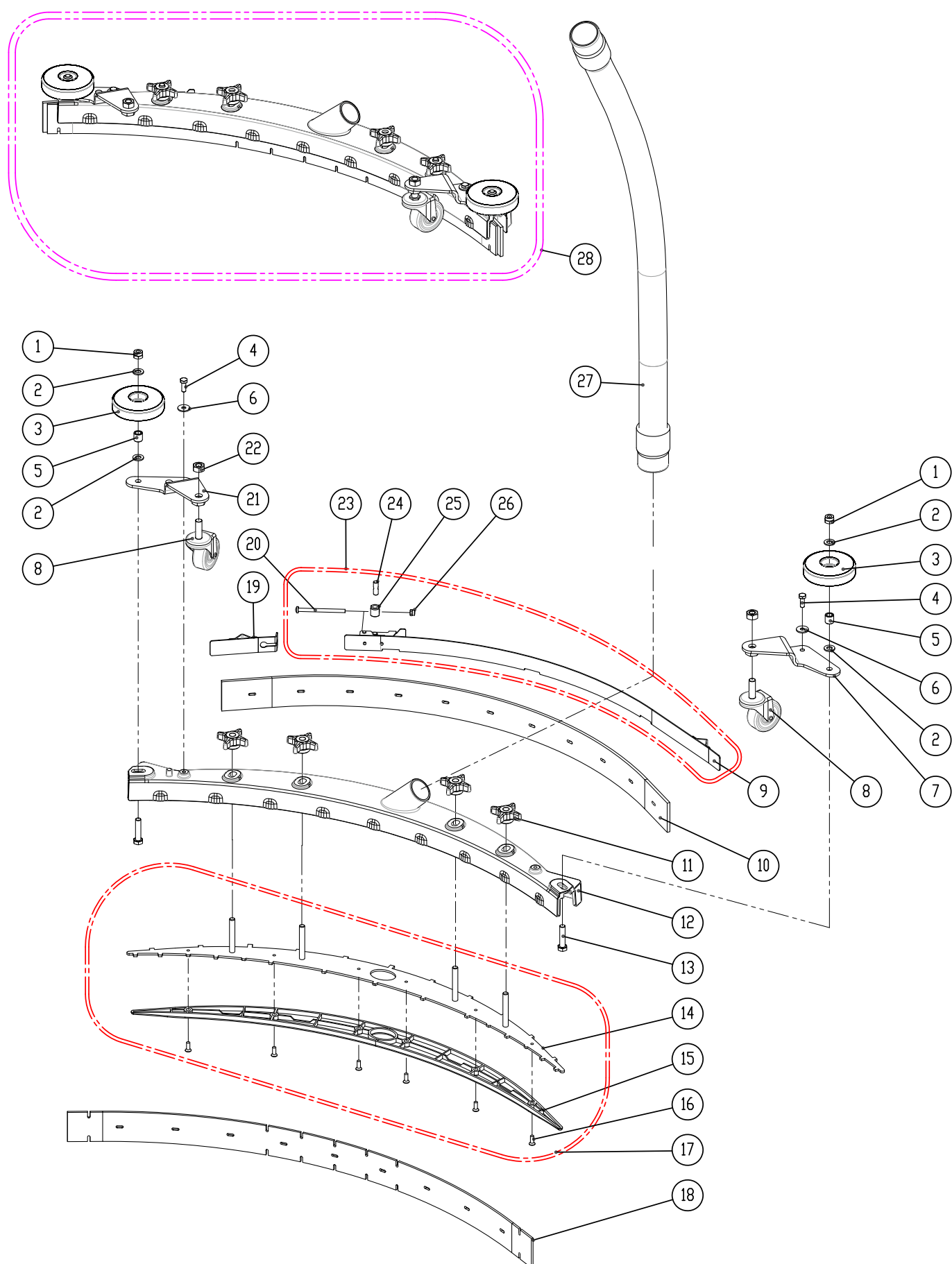
DIA NO	PART NUMBER	DESCRIPTION	NO REQ'D
45	9050018	BRUSH, 18 INCH	1
46	1021835	HEX HEAD BOLT, M8×35	1
47	1421824	FLAT WASHER, M8×DIA24×2.0	3
48	8116078	WHEEL, BUMPER	1
49	8115404	SLEEVEE, P/M	1
50	1123810	LOCK NUT, M8	1
51	1439005	RING, DIA5	1
52	8015105	HOUSING, BEARING	1
53	8015104	JOINT BEARING	1
54	1111008	HEX NUT, M10	1
55	8015106	DECAL	1
56	8015020	HANDLE, ADJUSTING	1
57	1511065	SOCKET BOLT M10×65	1
58	8015115	NYLON WASHER, DIA10.5×DIA30×2.5	2
59	8015002	BRACKET	1
60	8015121	SPACER	1
61	1113012	LOCK NUT M10	1

SQUEEGEE HOLDER ASSEMBLY

SQUEEGEE HOLDER ASSEMBLY

DIA NO	PART NUMBER	DESCRIPTION	NO REQ'D
1	8119005	BALL VALVE, G1/2	1
2	8119007	ELBOW G1/2	1
3	1962016	CLAMP	10
4	8050901	TUBING ID=12MM L=85MM	2
5	8119002	ELBOW, TUBING BARB	2
6	8050902	TUBING ID=12MM L=230MM	1
7	8119100	FILTER ASSEMBLY, 70 MESH	1
8	8119101	BASE, FILTER ASSEMBLY	1
9	1622760	O RING	1
10	8119103	SCREEN, FILTER, 70 MESH	1
11	8119102	CAP, FILTER ASSEMBLY	1
12	1421409	FLAT WASHER M4×DIA9×0.8	2
13	1221412	PAN HEAD SCREW M4×12	2
14	8050903	TUBING ID=12MM L=120MM	1
15	8018009	SOLENOID VALVE, 120V	1
16	8018004	TUBING	1
17	8015060	INLET, TUBING	1

SQUEEGEE ASSEMBLY



SQUEEGEE ASSEMBLY

DIA NO.	PART NUMBER	DESCRIPTION	NO REQ'D
1	1123810	LOCK NUT M8	2
2	1421824	FLAT WASHER M8× ϕ 24×2.0	4
3	8116078	PROTECTIVE WHEEL	2
4	1021616	HEX BOLT M6×16	2
5	8115404	BEARING, JOURNAL	2
6	1421612	FLAT WASHER M6× ϕ 12×1.6	2
7	8118300	RIGHT BRACKET	1
8	8118400	CASTER, 2 INCH	2
9	8118600	CLAMP ASSEMBLY, SQUEEGEE	1
10	8118022	SQUEEGEE BLADE, REAR, LINATEX	1
	8118002	SQUEEGEE BLADE, REAR, PU (OPTION)	1
11	8118003	STAR KNOB M8	4
12	8118004	SQUEEGEE HOUSING	1
13	1021835	HEX BOLT M8×35	2
14	8118009	RETAINER, SQUEEGEE	1
15	8118008	SPACER	1
16	1222515	SCREW M5×15	6
17	8118010	RETAINER ASSEMBLY	1
18	8118021	SQUEEGEE BLADE, FRONT, LINATEX	1
	8118001	SQUEEGEE BLADE, FRONT, PU (OPTION)	1
19	8118610	SHORT CLAMP ASSEMBLY	1
20	1221575	SCREW M5×75	1
21	8118200	LEFT BRACKET	1
22	1121008	HEX NUT M10	2
23	8118600A	CLAMP ASSEMBLY	1
24	8118624	SHAFT	1
25	8118623	SPACER	1
26	1123507	LOCK NUT M5	1
27	8011003	VACUUM HOSE	1
28	8118000-BK	SQUEEGEE ASSEMBLY, LINATEX	1

WEAR & TEAR PARTS LIST

DIA NO.	PART NUMBER	DESCRIPTION	NO. REQ'D
1	8115200	WHEEL, 8 INCH, WITH BEARINGS	2
2	8116078	BUMPER, ROLLER	3
3	8118400	CASTER, 2 INCH	2
4	8118001	FRONT SQUEEGEE BLADE, PU	1
	8118021	FRONT SQUEEGEE BLADE, LINATEX	1
5	8118002	REAR SQUEEGEE BLADE, PU	1
	8118022	REAR SQUEEGEE BLADE, LINATEX	1
6	9040017	PAD HOLDER, 17 INCH	1
7	9050018	BRUSH, 18 INCH	1
8	8015090	SPLASH GUARD, SCRUB HEAD	1

WIRING DIAGRAM

