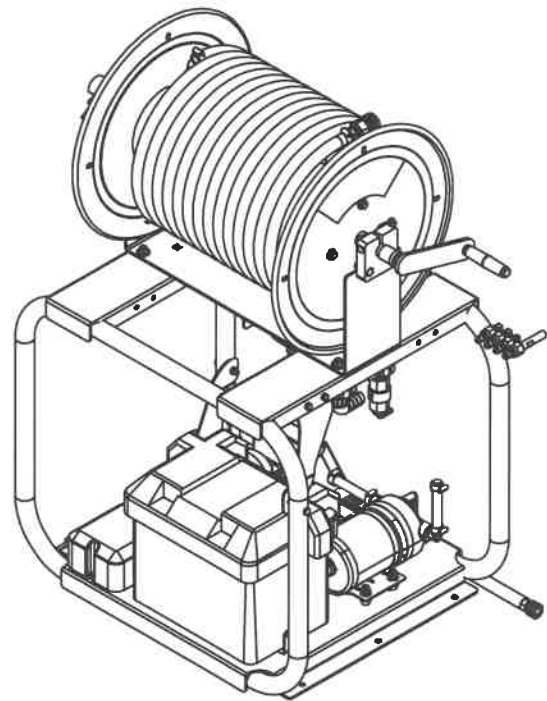
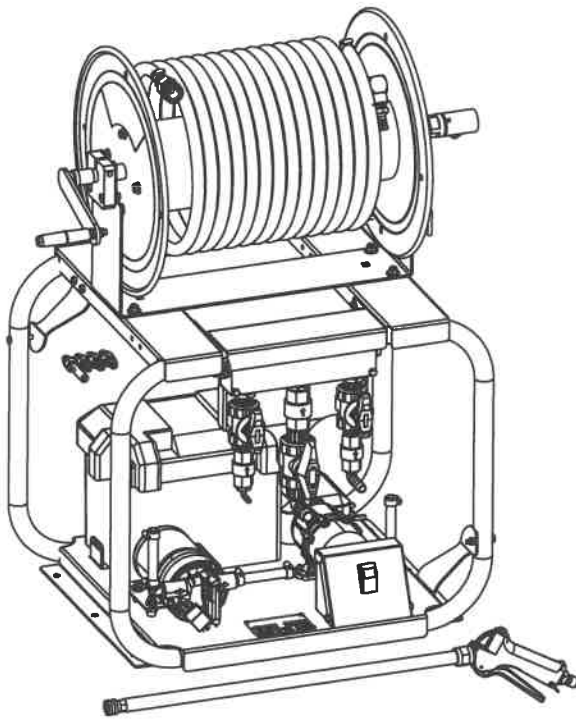


ITEM	NUMBER	DESCRIPTION	QTY.
1	02-111100	CAPSCREW, 1/4-20 x 3/4	6
2	02-111500	CAPSCREW: 1/4-20 X 1 3/4 ZINC PLATED	2
3	02-301100	NUT, HEX: 1/4-20, SERRATED	2
4	02-301130	NUT, HEX: NYLK 1/4"-20 ZINC	6
5	02-501100	WASHER: 1/4", FLAT, ZINC	2
6	02-522200	POP RIVET	4
7	03-000001	ONBOARD WATERPROOF CHARGER	2
8	26-101005	NAME PLATE PRIVATE LABEL	1
9	BSW-0012	FRAME WELDMENT, SOFT WASH, 12V	1

ITEM	NUMBER	DESCRIPTION	QTY.
10	BSW-0016	FORMED CORNER GUSSET, LEFT, S.W.	1
11	BSW-0017	FORMED CORNER GUSSET, RIGHT, S.W.	1
12	DSW-0003	DRIVE COMPONENT ASS'Y, SOFT WASH 12V, 7GPM	1
13	ESW-0003	GUN WAND ASS'Y, SOFT WASH	1
14	ESW-0010	SOFT WASH PROPORTIONER ASS'Y, 12V	1
15	ESW-0011	J-ROD SPRAY TIP ASS'Y; 5-7GPM SOFT WASH	1
16	FSW-0002	ELECTRICAL ASSEMBLY, SOFT WASH 12V, 7GPM	1
17	FSW-0002-0	SCHEMATIC, SOFT WASH 12V, 7GPM	1
18	ISW-0002	DECAL ASS'Y, SOFT WASH	1
19	JSW-0001	PACKAGING ASS'Y, SOFT WASH	1
20	KSW-0001	200 FT. SS SOFT WASH HOSE REEL	1



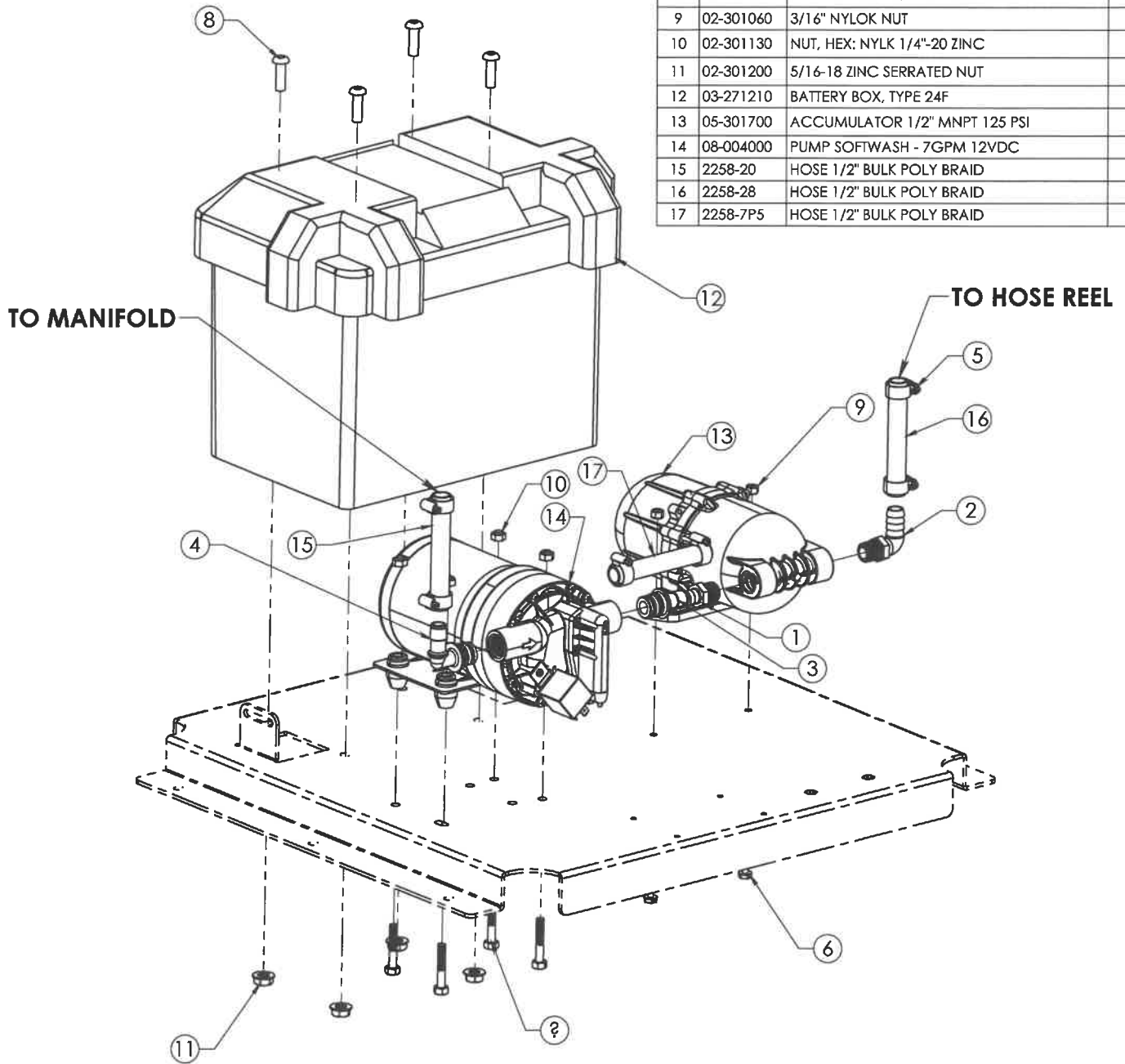
DESCRIPTION:
**SW7100-12V SOFT WASH
 7GPM@100PSI**

DESCRIPTION 2:
**WITH ACCUMULATOR,
 200FT 1/2" HOSE REEL**

DRAWN BY:
 BH
 DATE:
 9/27/2023

DRAW #:
ASW-0005

ITEM	NUMBER	DESCRIPTION	QTY.
1	01-411411	HOSE BARB 3/8" MNPT X 1/2" BARB	1
2	01-411412	HOSE BARB 3/8" MNPT X 1/2" BARB ELBOW	1
3	01-411807	HOSE BARB 3/4" QUICK ATTACH	1
4	01-411808	HOSE BARB 3/4" QUICK ATTACH	1
5	01-451001	HOSE CLAMP	6
6	02-102300	BOLT: 3/16 x 7/8"	2
7	02-111400	CAPSCREW: 1/4-20 X 1 1/2	4
8	02-121201	BUTTON HEAD 5/16 x 1" CAP SCREW	4
9	02-301060	3/16" NYLON NUT	2
10	02-301130	NUT, HEX: NYLK 1/4"-20 ZINC	4
11	02-301200	5/16-18 ZINC SERRATED NUT	4
12	03-271210	BATTERY BOX, TYPE 24F	1
13	05-301700	ACCUMULATOR 1/2" MNPT 125 PSI	1
14	08-004000	PUMP SOFTWASH - 7GPM 12VDC	1
15	2258-20	HOSE 1/2" BULK POLY BRAID	1
16	2258-28	HOSE 1/2" BULK POLY BRAID	1
17	2258-7P5	HOSE 1/2" BULK POLY BRAID	1



DESCRIPTION:
**DRIVE COMPONENT ASS'Y,
 SOFT WASH 12V, 7GPM**

DESCRIPTION 2:

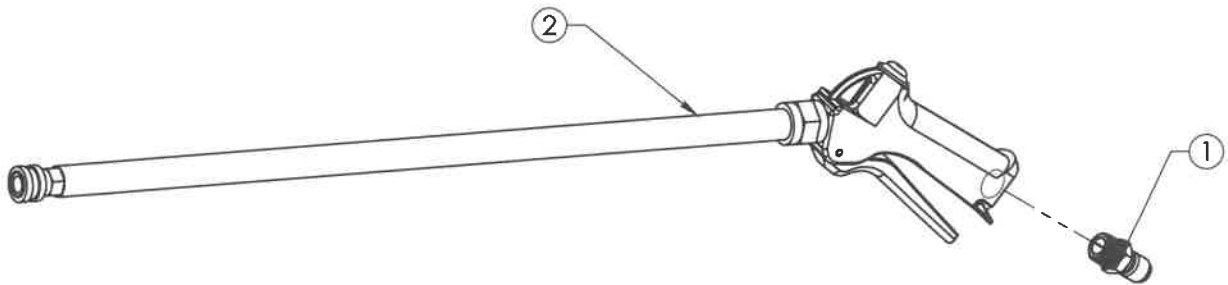
DRAW #:
DSW-0003

REV.	DESCRIPTION	ECR/ECN	DATE	BY
B	ADDED HOSES AND CLAMPS		1/29/2024	BH
A	01-411411 & 01-411412 WERE 01-411614 & 01-411615		11/29/2023	BH

DRAWN BY:
 BH
 DATE:
 9/27/2023

REVISIONS

ITEM	NUMBER	DESCRIPTION	QTY.
1	01-421604	QUICK COUPLER 1/2" MNPT PLUG	1
2	06-152450	GUN/LANCE SOFTWASH W/COUPLER	1



DESCRIPTION:
**GUN WAND ASS'Y, SOFT
WASH**

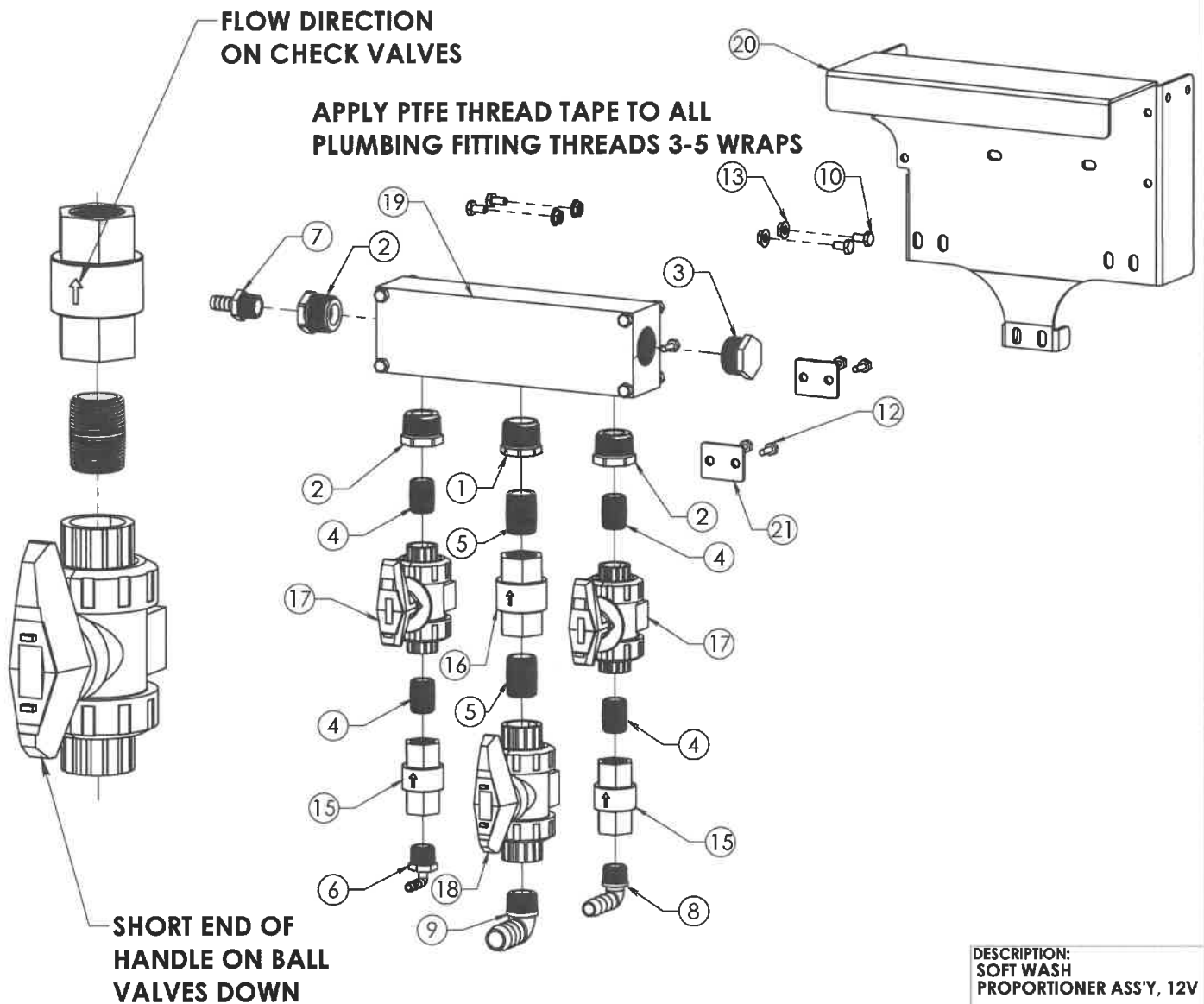
DESCRIPTION 2:

DRAWN BY:
BH
DATE:
8/9/2023

DRAW #:
ESW-0003

ITEM	NUMBER	DESCRIPTION	QTY.
1	01-102008	BUSHING 1" X 3/4" SCH80 PVC	1
2	01-102009	BUSHING 1" X 1/2" SCH80 PVC	3
3	01-231603	PLUG 1" MPT SCH80 PVC	1
4	01-281010	NIPPLE 1/2" CLOSE SCH80 PVC	4
5	01-291007	NIPPLE 3/4" CLOSE SCH80 PVC	2
6	01-411501	HOSE BARB 1/2" MPT X 3/8" HB ELBOW POLY	1
7	01-411614	HOSE BARB 1/2" MPT X 1/2" HB PVC	1
8	01-411615	HOSE BARB 1/2" MPT X 1/2" HB ELBOW PVC	1
9	01-411803	HOSE BARB 3/4" MPT X 3/4" HB ELBOW PVC	1
10	02-111000	CAP SCREW 1/4-20 x 1/2	4

ITEM	NUMBER	DESCRIPTION	QTY.
11	02-111700	CAPSCREW: 1/4-20 X 2 1/2	4
12	02-191001	HEX CAP SCREW	6
13	02-301100	NUT, HEX: 1/4-20, SERRATED	4
14	02-301130	NUT, HEX: NYLK 1/4"-20 ZINC	4
15	05-121240	CHECK VALVE 1/2" SOFTWASH	2
16	05-121250	CHECK VALVE 3/4" SOFTWASH	1
17	05-201230	BALL VALVE 1/2" SOFTWASH	2
18	05-201240	BALL VALVE 3/4" SOFTWASH	1
19	29-144100	PROPORTIONER MANIFOLD, SOFT WASH	1
20	BSW-0006	PROPORTIONER BRACKET	1
21	BSW-0008	BALL VALVE BACKING PLATE	3



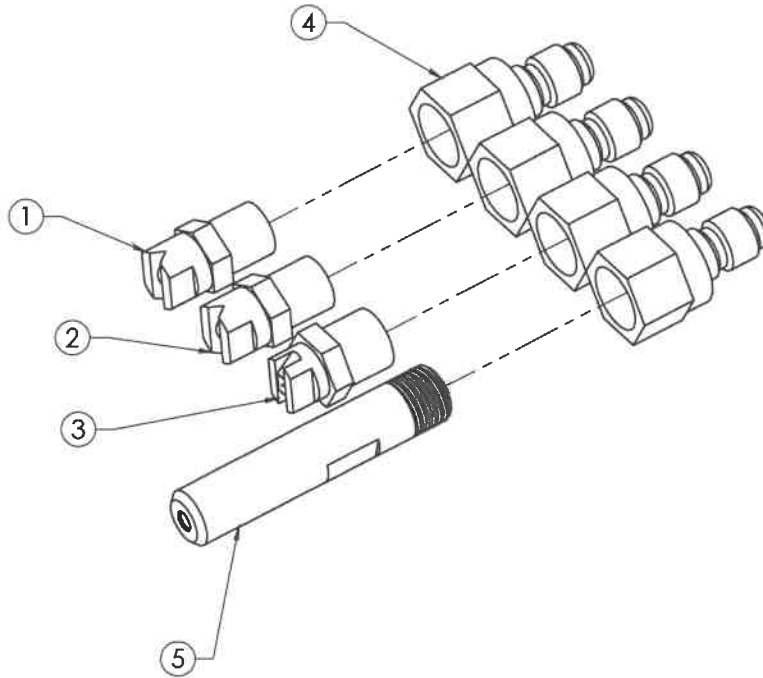
DESCRIPTION:
SOFT WASH
PROPORTIONER ASS'Y, 12V

DESCRIPTION 2:
WITH MANIFOLD

DRAWN BY:
BH
DATE:
9/27/2023

DRAW #:
ESW-0010

ITEM	NUMBER	DESCRIPTION	QTY.
1	06-104000	WASH JET #0040 1/4" MEG	1
2	06-104025	WASH JET #2540 1/4" MEG	1
3	06-104040	WASH JET #4040 1/4" MEG	1
4	BSW-0009	QUICK COUPLER WELDMENT, SOFT WASH	1
5	BSW-0010	SOFT WASH TALL REACH TIP 4.5-5 GPM	1



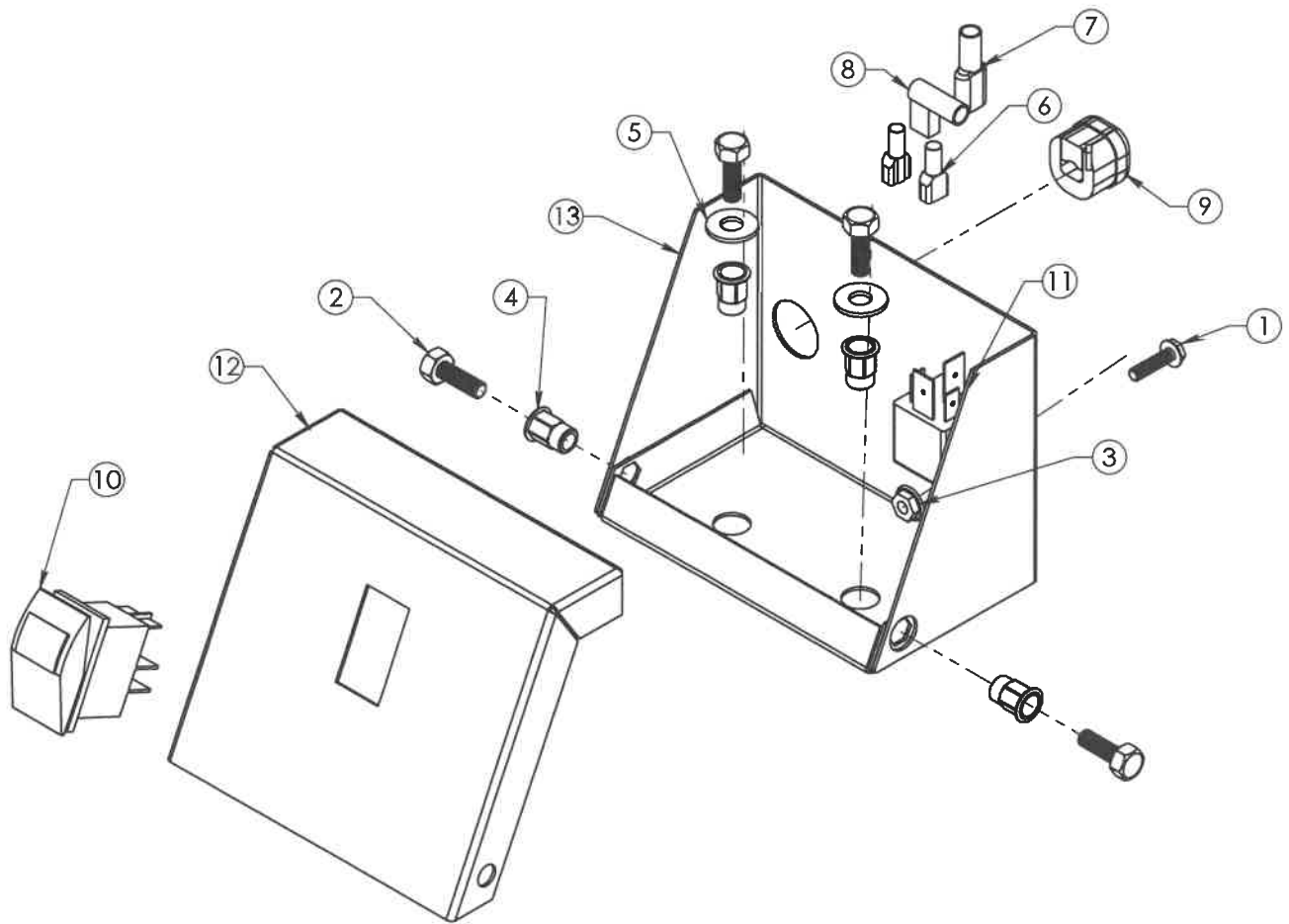
DESCRIPTION:
J-ROD SPRAY TIP ASS'Y; 5-7GPM SOFT WASH

DESCRIPTION 2:

DRAWN BY:
 BH
 DATE:
 9/28/2023

DRAW #:
ESW-0011

ITEM	NUMBER	DESCRIPTION	QTY.
1	02-101700	MACH SCREW, #10-32 x 3/4"	1
2	02-111100	CAPSCREW, 1/4-20 x 3/4	4
3	02-301003	HEX NUT #10-32 FLANGED	1
4	02-301106	RIVET NUT HEX 1/4"-20 UNC	4
5	02-501100	WASHER: 1/4", FLAT, ZINC	2
6	03-181001	SPADE, 250 FEM, 14-16, INSUL	2
7	03-181004	FEMALE PUSH ON	1
8	03-181012	UNSQL. FLAG 90 DEG.	1
9	03-192100	CONNECTOR "W" ST BLACK	1
10	03-211319	ROCKER SWITCH 20A 12 V	1
11	03-312025	12VDC 70AMP RELAY	1
12	BSW-0014	CONTROL PANEL, SOFT WASH, 12V	1
13	BSW-0015	CONTROL BOX, SOFT WASH, 12V	1

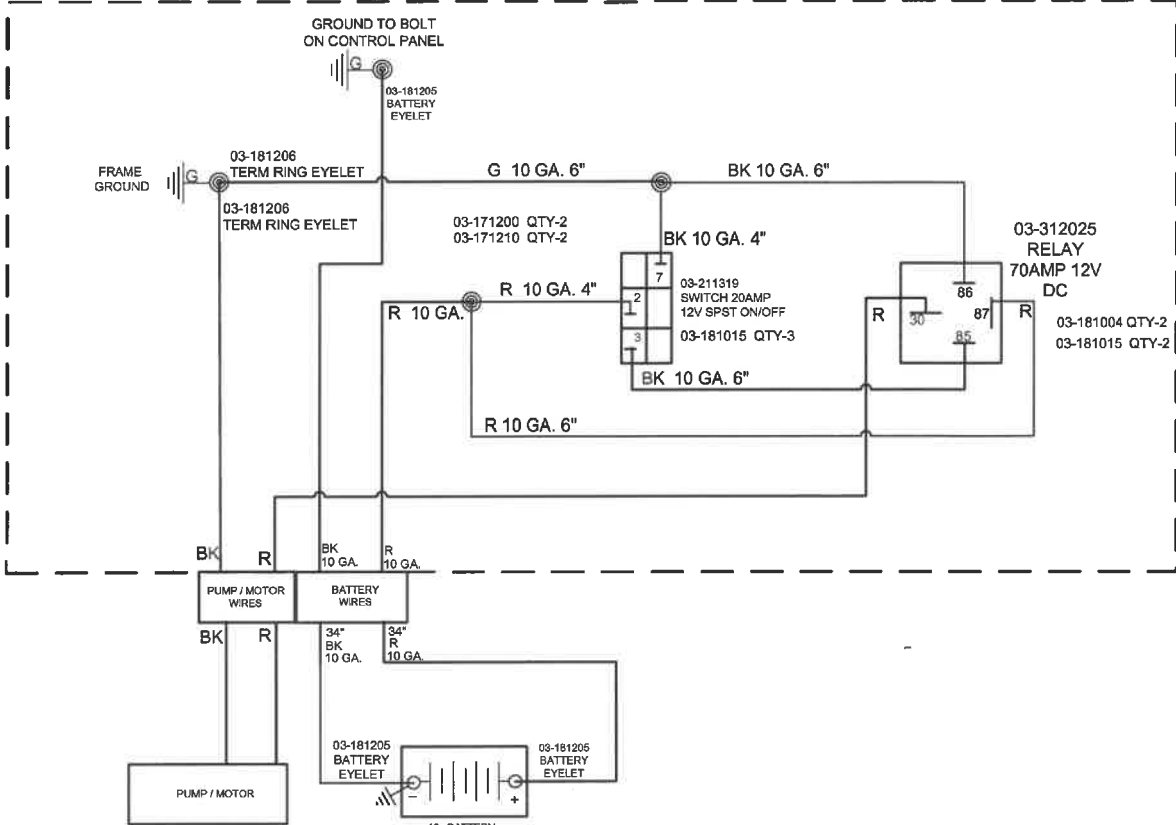


DESCRIPTION:
ELECTRICAL ASSEMBLY,
SOFT WASH 12V, 7GPM

DESCRIPTION 2:

REV.	DESCRIPTION	ECR/ECN	DATE	BY	DRAWN BY:	DATE:
A	03-192100 WAS 03-192000; CHANGED PER TIM I.		1/25/2024	BH	BH	
	REVISIONS					10/02/2023

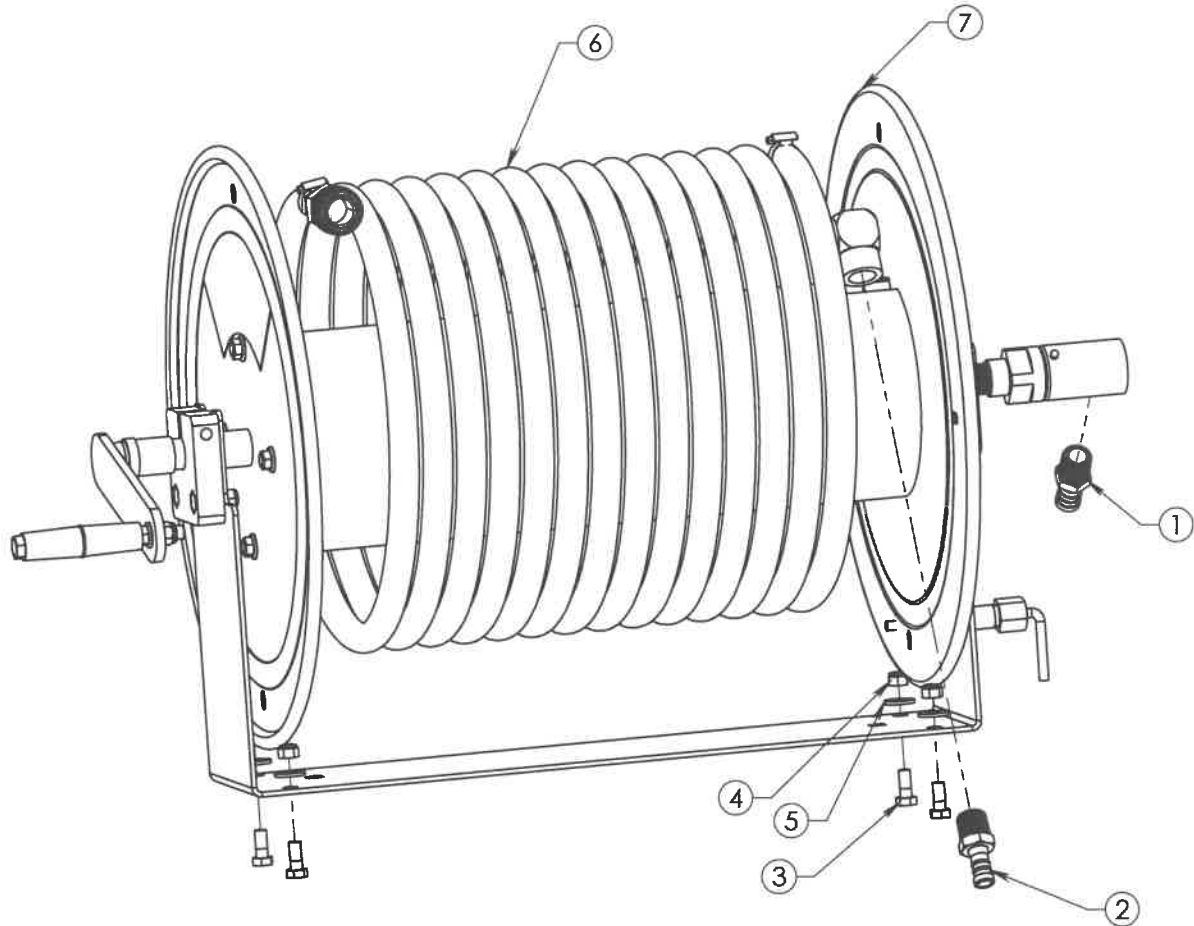
DRAW #: **FSW-0002**



- 03-171200 SPLICE CAP INSUL LARGE QTY-2
- 03-171210 -WIRE NUT QTY-2
- 03-181004 INSL CONN. QTY-2
- 03-181015 INSL CONN. QTY-5
- 03-181205 BATTERY EYELET QTY-2
- 03-181206 TERM EYELET QTY 2
- 2116 WIRE: BLACK 10GA MTW X 6"
- 2166 WIRE: RED 10GA MTW X 6"
- 2165 WIRE: GREEN 10GA MTW X 6"
- 2166 WIRE: RED 10GA MTW X 34"
- 2165 WIRE: GREEN 10GA MTW X 34"

TITLE	
SCHEMATIC	
MODEL:	
SOFT WASH 12V, 7GPM	
DRAWN BY:	DATE:
TI - FH	10-4-2023
PART NUMBER:	
FSW-0002-0	

ITEM	NUMBER	DESCRIPTION	QTY.
1	01-411804	HOSE BARB 3/4" X 1/2" MPT SST	1
2	01-412209	HOSE BARB 1/2" X 1/2" MNPT	1
3	02-121100	CAPSCREW: ZINC 5/16 x 3/4	4
4	02-301230	HEXNUT: NYLK 5/16-18 ZINC	4
5	02-501200	WASHER, 5/16" FLAT, ZINC	4
6	ESW-0005	200 FT SOFT WASH HOSE ASS'Y	1
7	KSE-1000-SW-L	18" S.S. REEL ASSEMBLY LEFT HAND	1



DESCRIPTION:
200 FT. SS SOFT WASH
HOSE REEL

DESCRIPTION 2:
W/200 FT HOSE

DRAWN BY:
BH
DATE:
8/9/2023

DRAW #:
KSW-0001