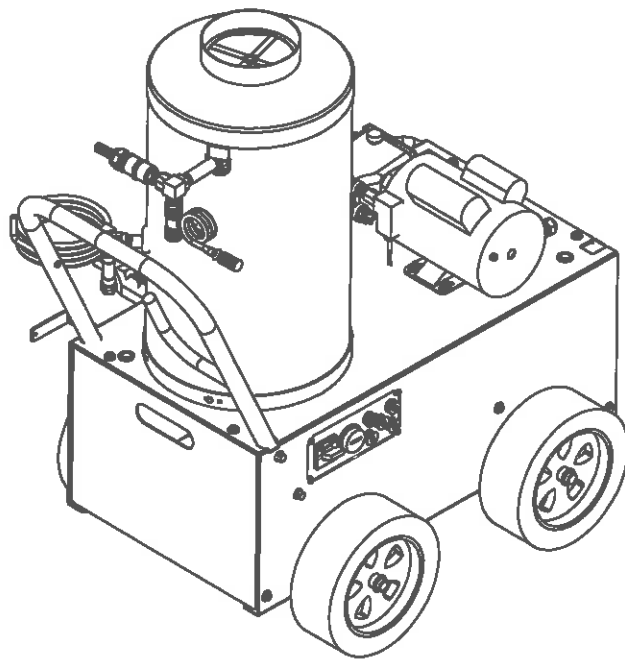
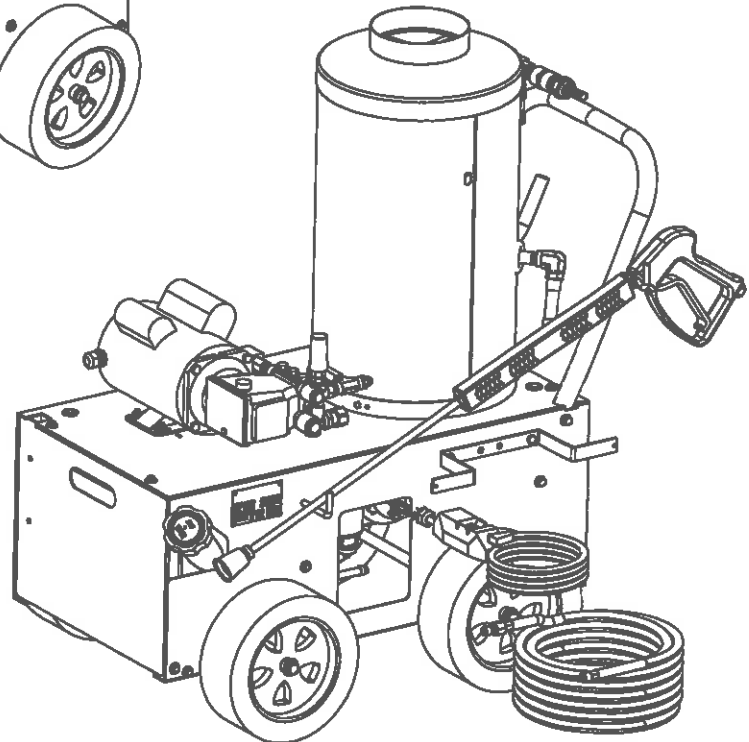
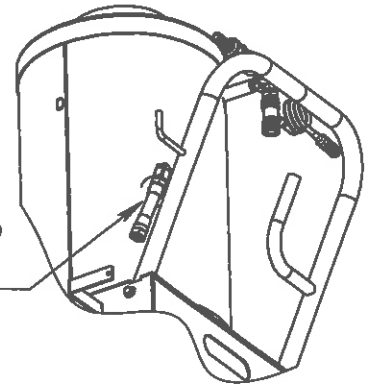


ITEM	NUMBER	DESCRIPTION	QTY.
1	02-522220	POP RIVET 5/32 X 1/2	4
2	06-106540-1	SPRAY TIP 65DEGx40 BLACK	1
3	06-400060-1	WASH JET	1
4	06-415060-1	WASH JET	1
5	06-425060-1	WASH JET	1
6	06-440060-1	WASH JET	1
7	26-101005	NAME PLATE PRIVATE LABEL	1
8	BC4-4001-1A	HEAT CHAM. JR ECONOMY, SILVER HAMMER	1
9	CCF1-1000	PUMP/MOTOR ASS'Y 3@1000	1
10	E01-0295A	HOSE ASSY 50'	1
11	E04-1049	COIL OUTLET ASSY	1

ITEM	NUMBER	DESCRIPTION	QTY.
12	E04-4003	COIL INLET ASS'Y - SIDE OUTLET COIL	1
13	EC4-5004	GUN ASSEMBLY	1
14	ECF1-1000	FUEL TANK ASSEMBLY	1
15	FCF1-1000	ELEC ASSY CFH-3010E OIL GC DDE PNL-TC	1
16	FCF1-1000-0	SCHEMATIC CFH-3010E OIL GC DDE PNL-TC	1
17	GCF1-1000	OIL BURNER ASS'Y CFH-3010E	1
18	ICFH-1000	DECAL ASSEMBLY	1
19	JSE4-4000	PACKAGING ASS'Y	1
20	KC4-4000-1	PORTABILITY KIT	1
21	KCF1-1000	CORD WRAP KIT	1
22	XCF1-1000	MACHINE SUB ASS'Y (JR PORTABLE) D.D.E.	1



COIL INLET ROTATED  
SAME ANGE AS  
HANDLE



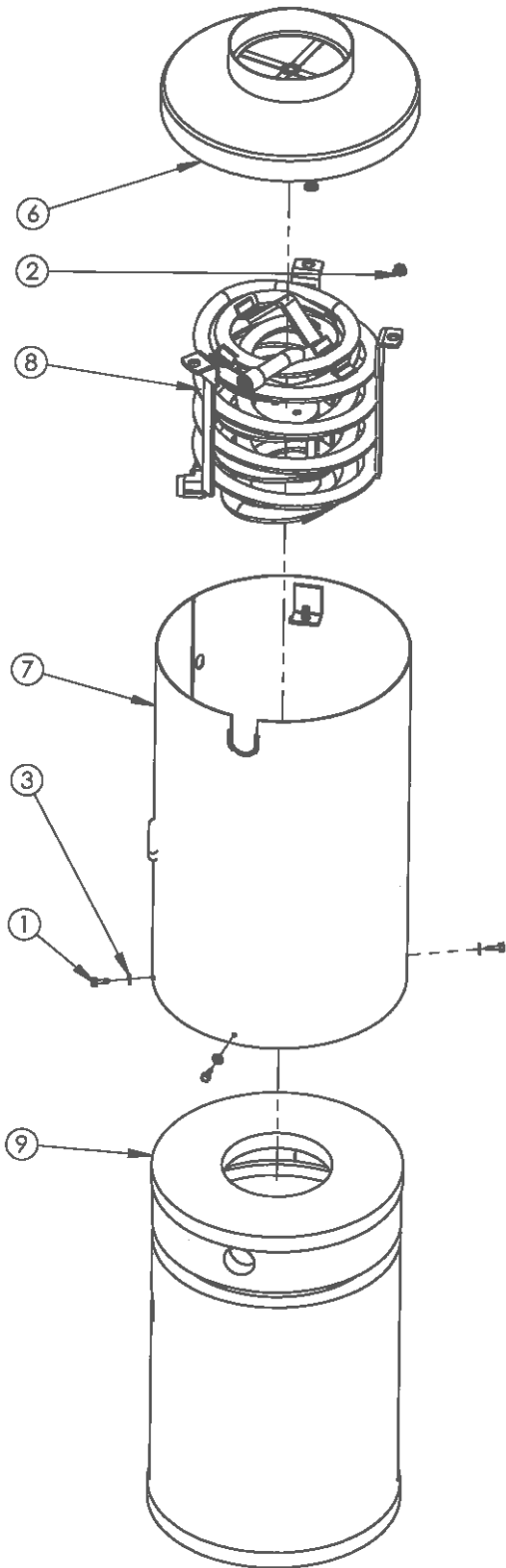
DESCRIPTION:  
CFH-3010E OIL GC DDE  
PNL-TC 3@1000

DESCRIPTION 2:  
115V 1PH 2HP 1PH C-FACE

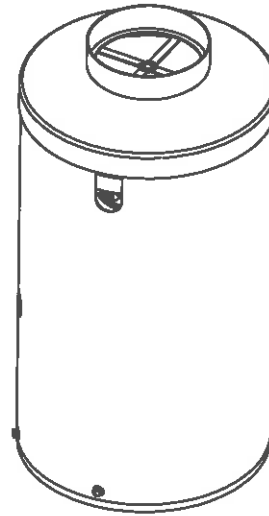
DRAWN BY:  
BH  
DATE:  
2/7/2022

DRAW #:  
ACF1-1000

ITEM	NUMBER	DESCRIPTION	QTY.
1	02-101600	SCREW 1/4"-14 x 3/4" KWIK	4
2	02-301300	3/8 NUT SERRATED	3
3	02-501202	WASHER 5/16" STAR	4
4	1903-4	BULK ITEM 3/8" VINYL EDGING	1
5	2005-4	1/2" ROPE X 4" LONG	1
6	B01-1006-2	STACK WELDMENT OIL, SILVER HAMMER	1
7	B01-2067-2	CHAMBER WRAPPER WELD'T (NO CLIP)	1
8	B01-6223	HEATING COIL WELDMENT ASSY	1
9	H01-2003-A	INSULATION JR 14" TOP OUTLET/SIDE INLET	1



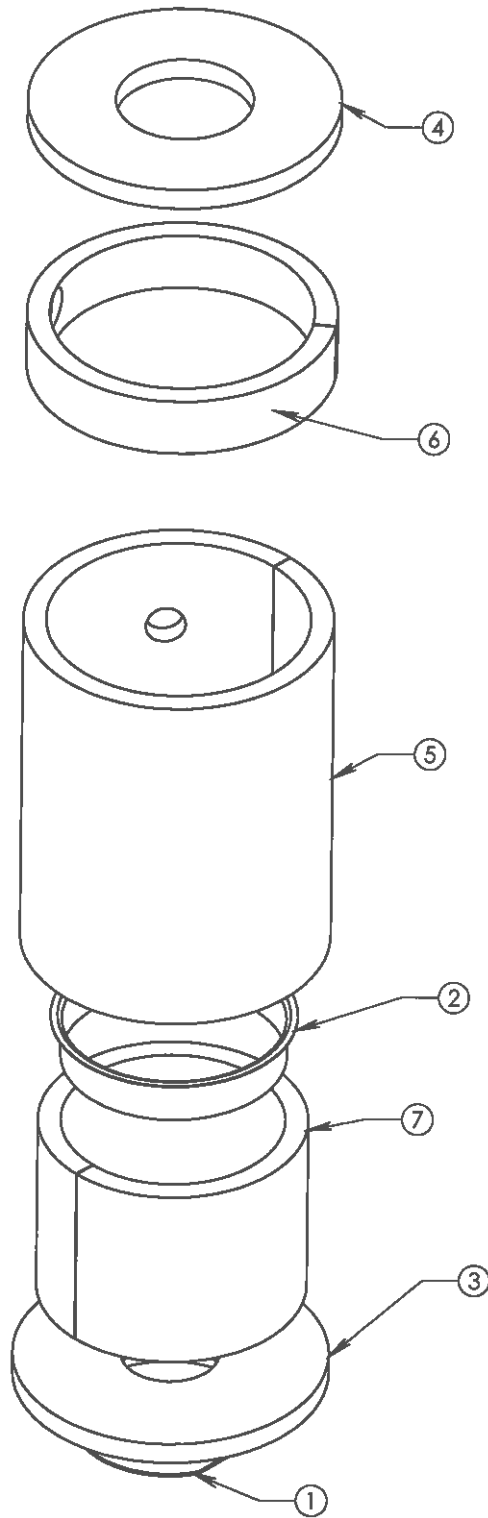
NOTE: WRAP COIL INLET HOLE WITH 4" OF 1/2" FIBERFAX ROPE INSULATION. PUT 4" OF VINYL ON COIL OUTLET HOLE.



DESCRIPTION:  
**HEAT CHAM. JR  
 ECONOMY, SILVER  
 HAMMER**  
 DESCRIPTION 2:  
**JR 21.5" BSS TOP OUT/SIDE  
 IN (NO CLIP NO BUCKET)**  
 DRAW #:  
**BC4-4001-1A**

DRAWN BY: BH  
 DATE: 2/8/2022

ITEM	NUMBER	DESCRIPTION	QTY.
1	10-111236-1	BURNER GASKET #31653	1
2	BA1-1006	M.S. INSULATION BAND JR.	1
3	H01-1001	INSULATION DONUT	1
4	H01-1002	STACK HEAD RING 14/6	1
5	H01-1005	WRAPPER BLANKET JR 16 3/4"	1
6	H01-1006	WRAPPER BLANKET JR 2 3/4"	1
7	H01-1008	INSULATION JR 8 3/4" X 33 3/4"	1



DESCRIPTION:  
INSULATION JR 14" TOP  
OUTLET/SIDE INLET

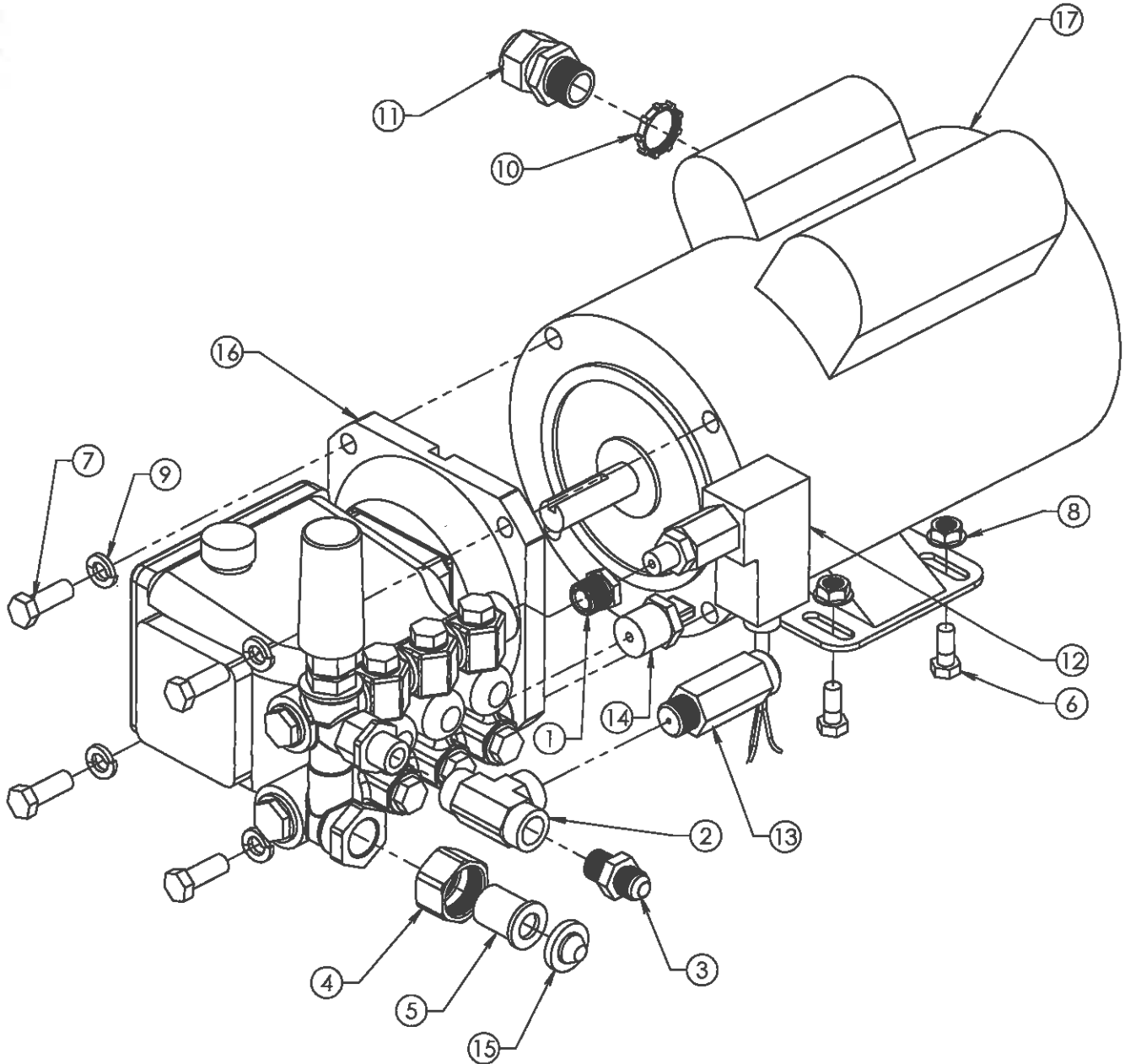
DESCRIPTION 2:  
KITS (NO INSUL BUCKET)

DRAWN BY:  
BH  
DATE:  
9/21/2021

DRAW#:  
H01-2003-A

ITEM	NUMBER	DESCRIPTION	QTY.
1	01-101203	BUSH: 3/8 X 1/4 HEX GALV	1
2	01-161204	TEE, 3/8" HD, ZINC, STEEL	1
3	01-221424	CONNECTOR: 3/8" JIC X 3/8" MPT	1
4	01-401000	GRDN HSE ADPTR NUT 3/4"	1
5	01-401010	GARDEN HOSE ADAP, SWV 1/2	1
6	02-121100	CAPSCREW: ZINC 5/16 x 3/4	4
7	02-131200	CAP SCREW: 3/8"-16 x 1"	4

ITEM	NUMBER	DESCRIPTION	QTY.
8	02-301200	5/16-18 ZINC SERRATED NUT	4
9	02-511301	WASHER, LOCK PLATED 3/8"	4
10	03-191005	CONDUIT, LOCKING NUT 1/2"	1
11	03-192520	HEYCO CONN. 3200 1/2"	1
12	04-101951	PRES. SWITCH 1/4" .215 PSI	1
13	05-111311	RELIEF VALVE, ORANGE	1
14	05-112400	145' THERMO RELIEF VALVE	1
15	05-121501	SCREEN, FILTER WASHER 1"	1
16	08-176900	PUMP: RCV3G25E-F8M2I	1
17	09-123550	ELECTRIC MOTOR 2HP 1PH C-FACE	1



DESCRIPTION:  
PUMP/MOTOR ASS'Y  
3@1000

DESCRIPTION 2:

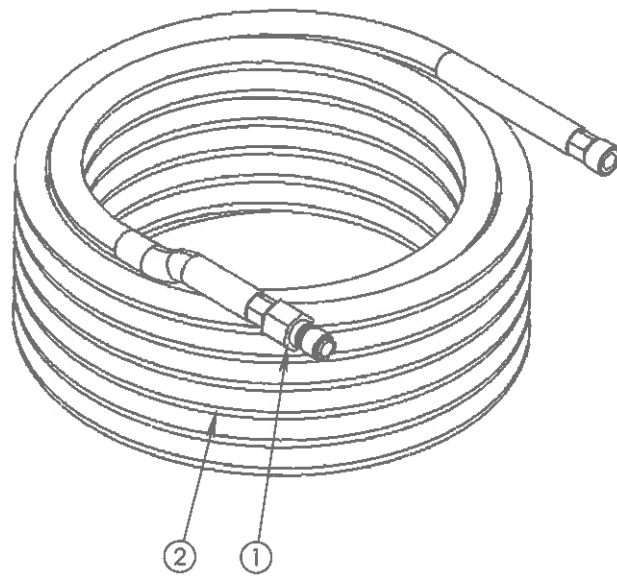
REV.	DESCRIPTION	ECR/ECN	DATE	BY
B	SWAPPED RELIEF VALVE AND PRESSURE SWITCH; ADDED PUMP MOUNTING BOLTS		6/30/2022	BH
A	01-221424 WAS 01-221423		4/15/2022	BH

DRAWN BY:  
BH  
DATE:  
2/8/2022

DRAW #:  
CCF1-1000

REVISIONS

ITEM	NUMBER	DESCRIPTION	QTY.
1	01-421300	QUICK COUPLER, NIPPLE, 3/8" FNPT	1
2	11-115015	HOSE: 3/8" x 50'WRPPD IMPAC 4000	1



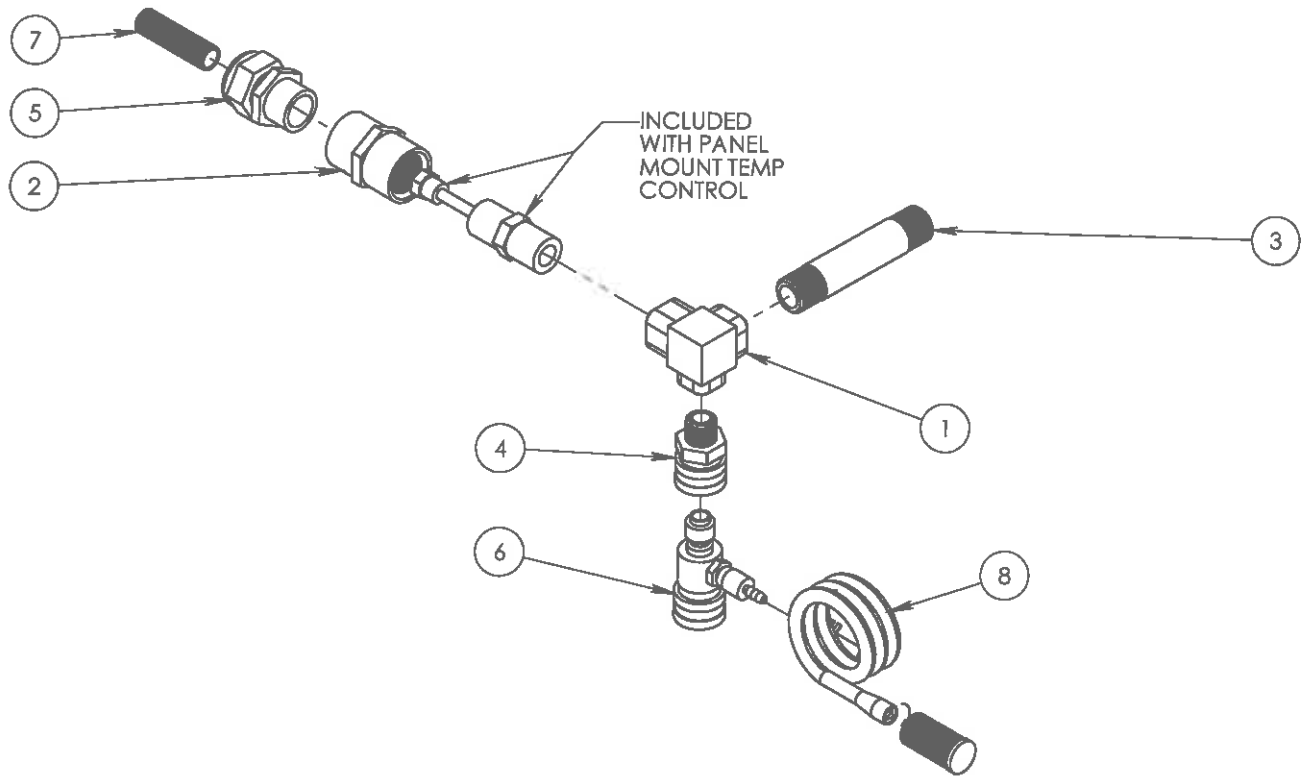
DESCRIPTION:  
HOSE ASSY 50'

DESCRIPTION 2:  
W/QUICK COUPLER NIPPLE  
3/8"

DRAWN BY: LG  
DATE: 05/07/2018

DRAW #: E01-0295A

ITEM	NUMBER	DESCRIPTION	QTY.
1	01-151304	ELBOW SO 1/2X1/2X3/8 HD BRASS GENERAL	1
2	01-221310	COUPLING, 3/4" X 1/2", PVC	1
3	01-281604	NIPPLE, HD, 1/2 X 4" ZINC	1
4	01-421200	QUICK COUPLER 3/8" NPT	1
5	03-192530	HEYCO CONN. 3234 3/4"	1
6	06-161501-1	INJECTOR	1
7	2120-36	SPLIT LOOM 3/8" POLY	1
8	E01-0020	84" SOAP HOSE ASSY W/CHECK VALVE SCREEN	1



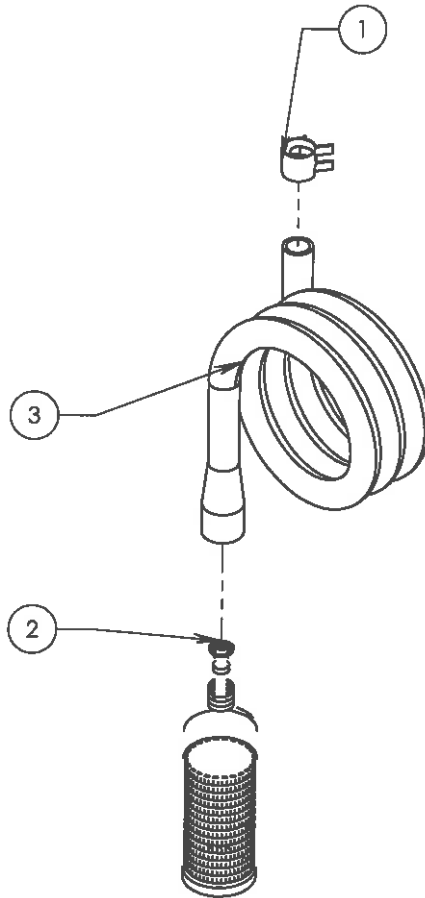
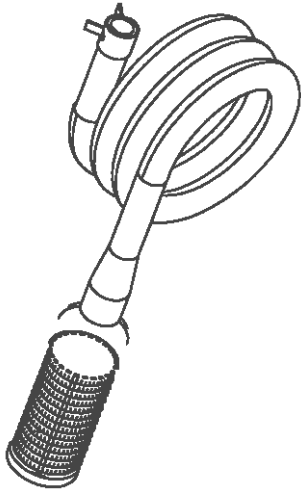
**DESCRIPTION:**  
COIL OUTLET ASSY

**DESCRIPTION 2:**  
41-425/435 PNL TC

DRAWN BY: LG  
DATE: 11/7/14  
REV: -  
SHEET 1 OF 1

**DRAW #:**  
**E04-1049**

ITEM	NUMBER	DESCRIPTION	QTY.
1	01-451011	UNI CLAMP 1/4"	1
2	05-121000	CHECK VLV W/STRAINER 1/4"	1
3	2211-84	HOSE: 1/4" POLY BRAID	1



DESCRIPTION:  
84" SOAP HOSE ASSY

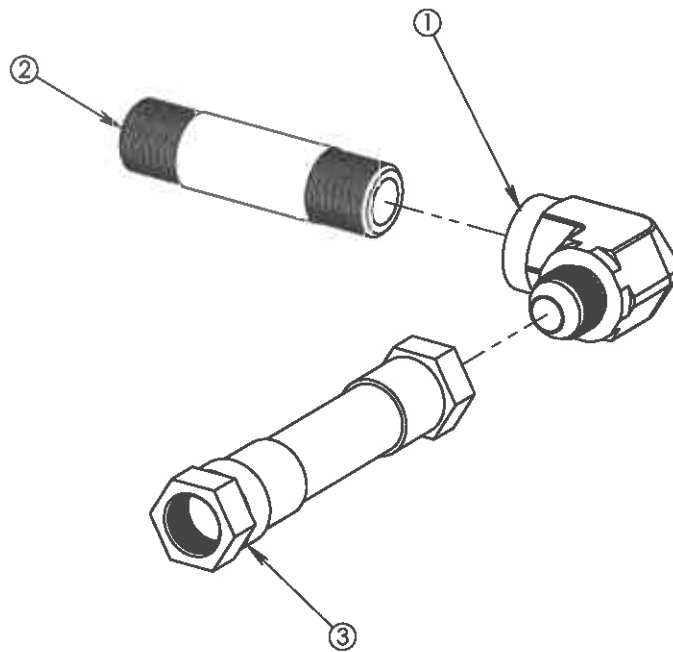
DESCRIPTION 2:  
W/CHECK VALE  
SCREEN

DRAW #:  
E01-0020

REV.	DESCRIPTION	ECR/ECN	DATE	BY
REVISIONS				

DRAWN BY: DATE  
C.05 5/18/11  
SHEET 1 OF 1

ITEM	NUMBER	DESCRIPTION	QTY.
1	01-111314	ELBOW: 1/2" JIC X 1/2" FPT	1
2	01-281404	NIPPLE, 1/2" X 3", SCH 80	1
3	11-132001	3/8 HOSE: IMPAC4000 - 20"	1



**NOTE:** ORIENTATION OF ASSEMBLY VIEW SHOWN ABOVE IS NOT NECESSARY THE INSTALLATION ORIENTATION USED IN MACHINE ASSEMBLY.

DESCRIPTION:  
COIL INLET ASS'Y - SIDE  
OUTLET COIL

DESCRIPTION 2:  
41-330 JR JIC

DRAW #: E04-4003

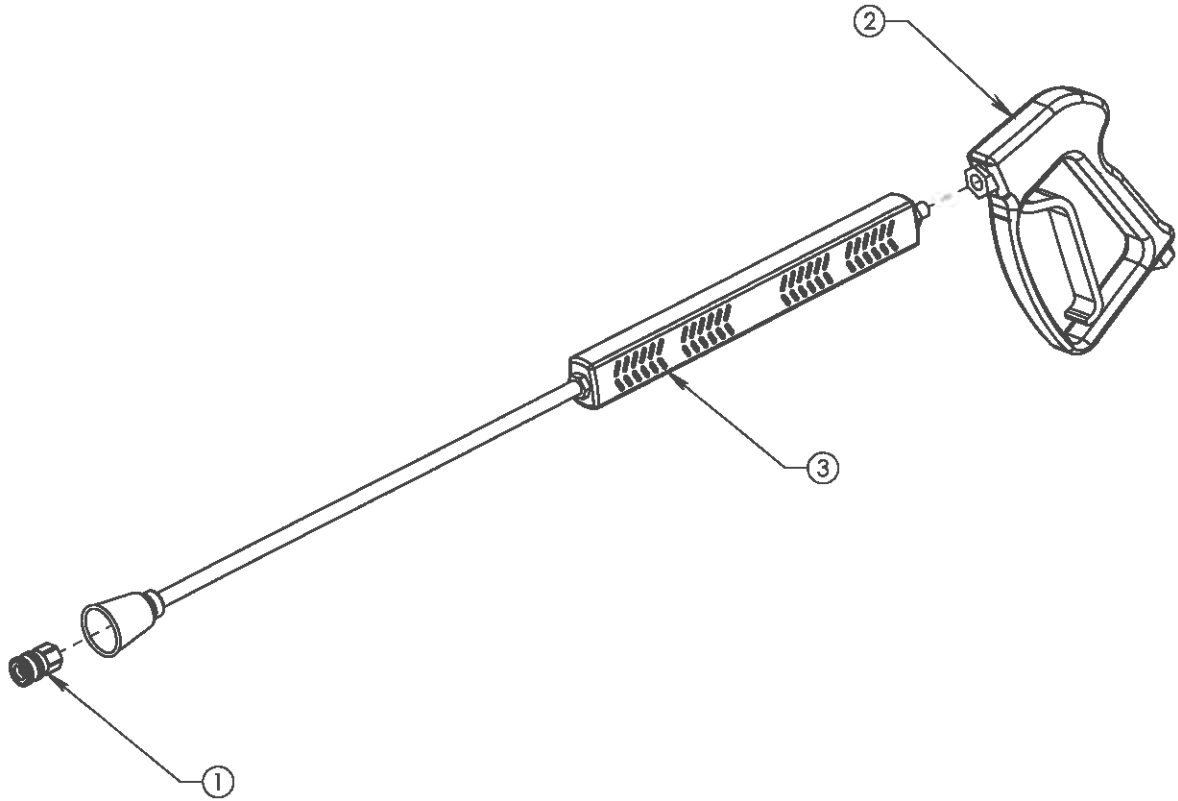
REV.	DESCRIPTION	ECR/ECN	DATE	BY	DATE
A	ADDED UNNECESSARY NOTE		8/23/2014	BK	
					10/21/2015

REVISIONS

DRAWN BY: LG  
DATE: 10/21/2015



ITEM	NUMBER	DESCRIPTION	QTY.
1	01-421000	QUICK COUPLER, 1/4" FNPT	1
2	06-152510	GUN HANDLE GENERAL 5000PSI	1
3	06-201300	SINGLE LANCE 1/4" X 36"	1



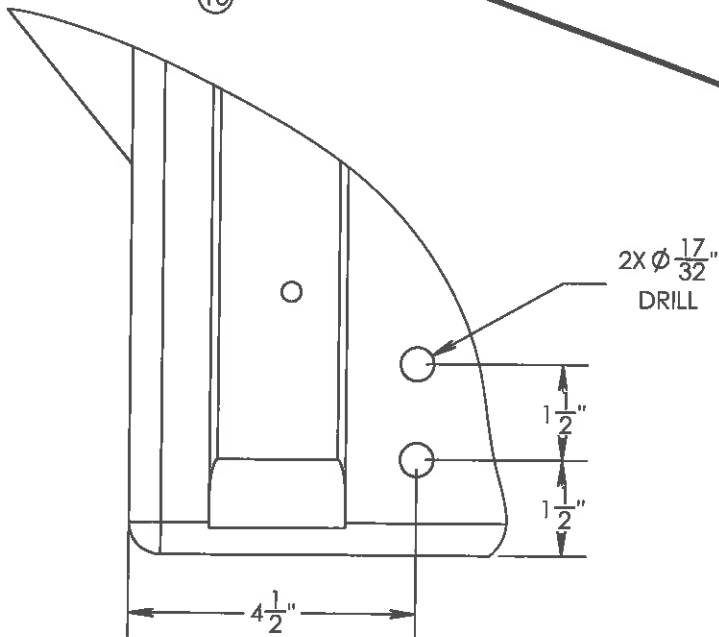
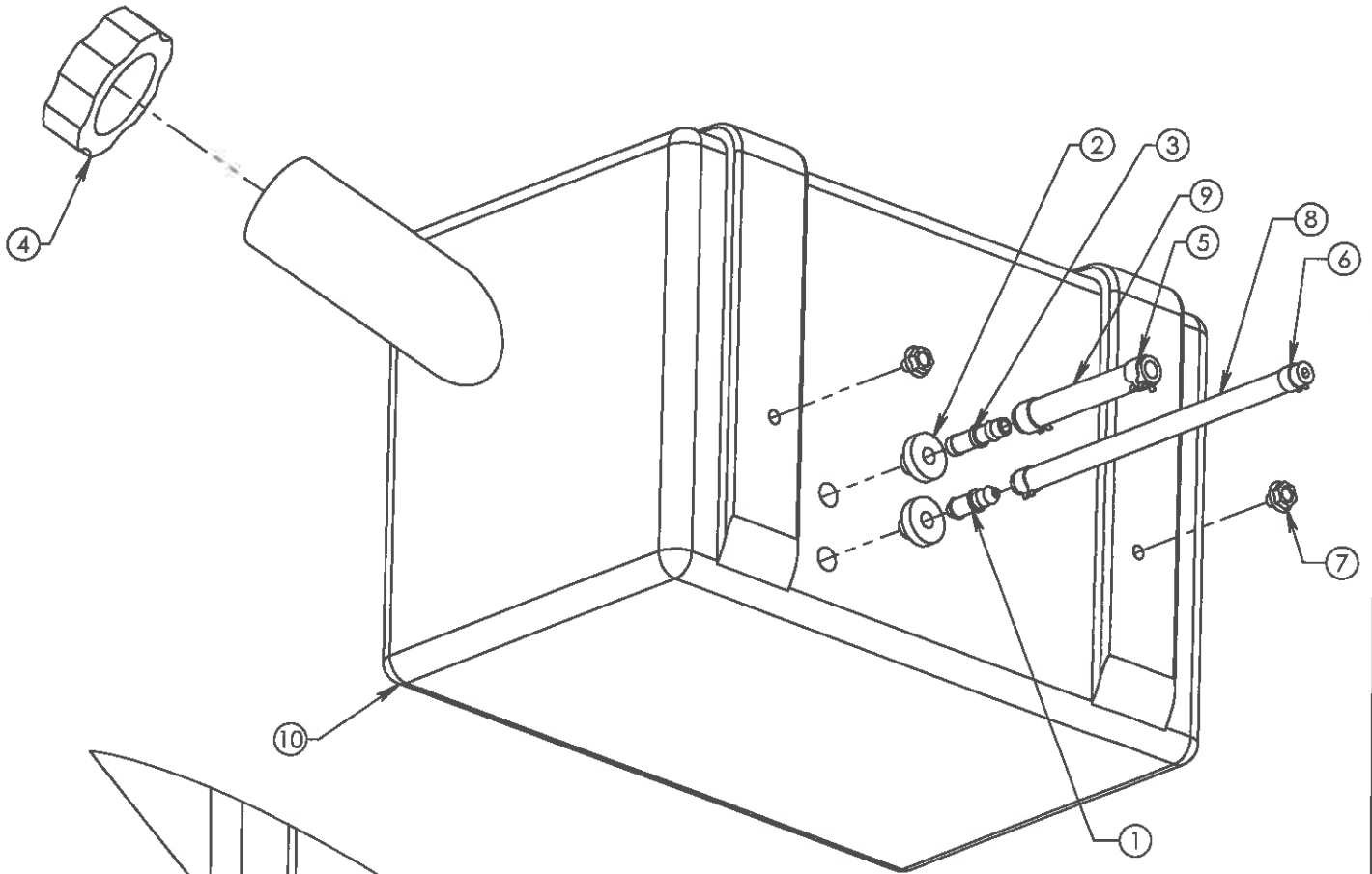
DESCRIPTION:  
GUN ASSEMBLY

DESCRIPTION 2:

DRAWN BY:  
BK  
DATE:  
6/27/2016

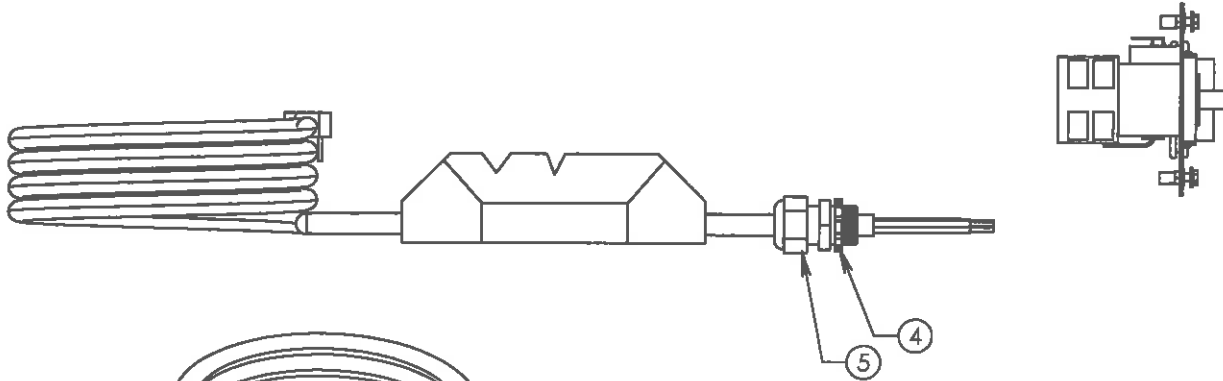
DRAW #:  
EC4-5004

ITEM	NUMBER	DESCRIPTION	QTY.
1	01-411112	DAPCO/DEXTER BARB 1/4"	1
2	01-411112-1	DAPCO/DEXTER BARB GROMMET	2
3	01-411117	HOSE BARB DEXTER 3/8"	1
4	01-431203	CAP DIESEL W/GREENCRYSTAL	1
5	01-451010	UNI CLAMP: FOR FUEL TANKS 3/8"	2
6	01-451020	UNI CLAMP: 1/4" FUEL LINE	2
7	02-121001	HEX WASHER HEAD CAP SCREW	2
8	2202-9	1/4" FUEL LINE HOSE	1
9	2203-14	BULK ITEM 3/8" FUEL LINE	1
10	29-131109	FUEL TANK, JR/SR SQ	1

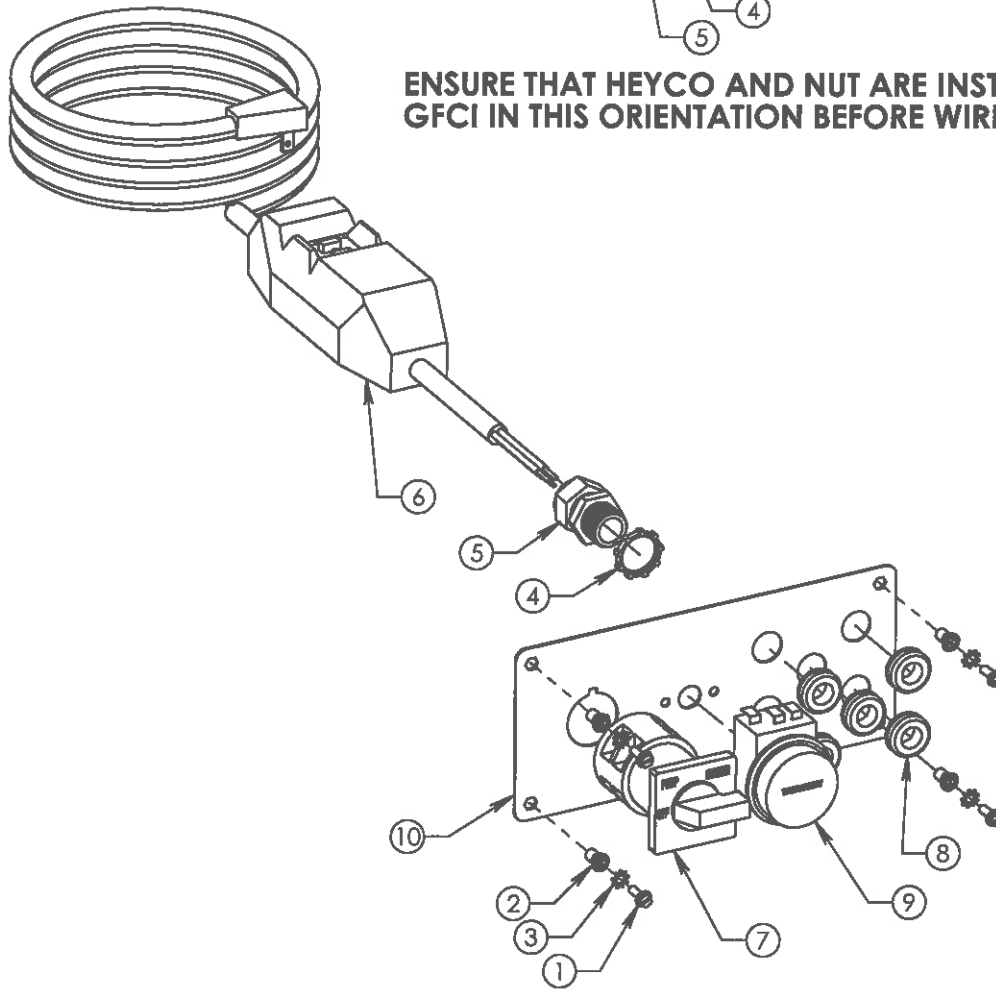


DESCRIPTION:	FUEL TANK ASSEMBLY
DESCRIPTION 2:	
DRAWN BY:	BH
DATE:	2/14/2022
DRAW #:	ECF1-1000

ITEM	NUMBER	DESCRIPTION	QTY.
1	02-101007	HEX HEAD WASHER BOLT 8-32 X 1/2"	4
2	02-301020	RIVNUT:8-32" W/HEX	4
3	02-501002	STAR WASHER	4
4	03-191005	CONDUIT, LOCKING NUT 1/2"	1
5	03-192520	HEYCO CONN. 3200 1/2"	1
6	03-211720-36	GFCI 120V 20AMP 36'	1
7	03-222000	SWITCH, CAM ROTARY, 120V	1
8	03-241000	GROMMET (FOR WASH JETS)	5
9	04-101449	THERMOSTAT CONTROL	1
10	BSE4-4000	CONTROL PANEL - TEMP CTRL	1



**ENSURE THAT HEYCO AND NUT ARE INSTALLED ONTO THE GFCI IN THIS ORIENTATION BEFORE WIRING TO SWITCH**



DESCRIPTION:  
ELEC ASSY CFH-3010E OIL  
GC DDE PNL-TC

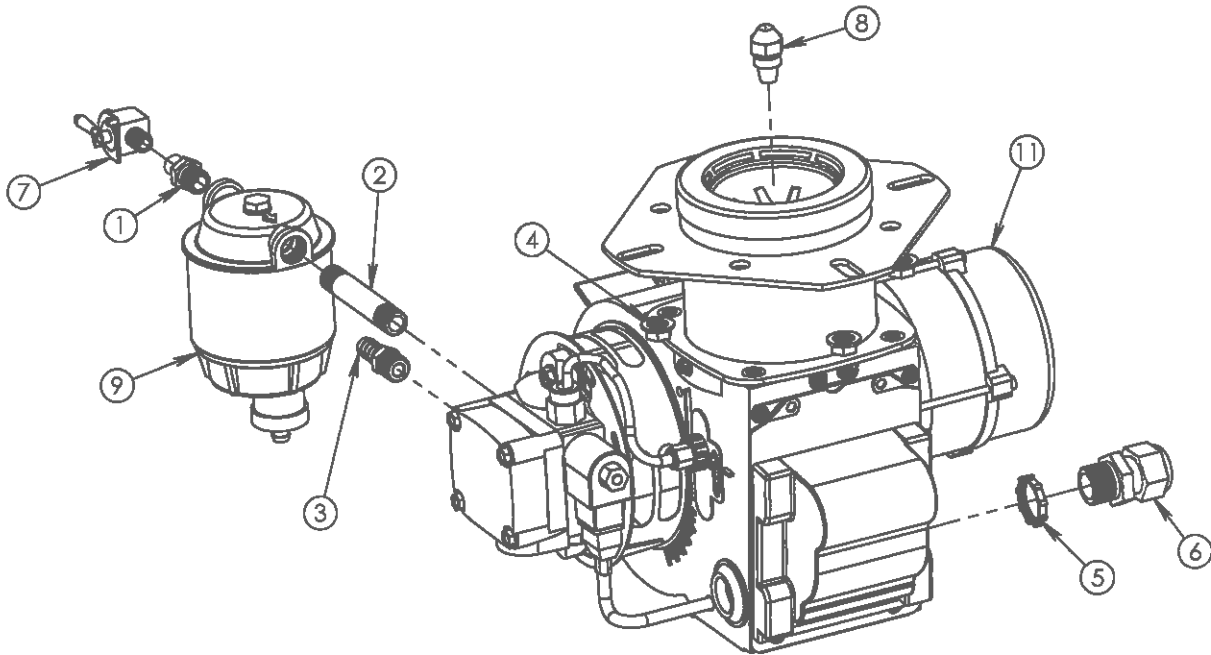
DESCRIPTION 2:  
115V 1PH 2HP C-FACE

DRAWN BY:  
BH  
DATE:  
3/10/2022

DRAW #:  
FCF1-1000



ITEM	NUMBER	DESCRIPTION	QTY.
1	01-101003	BUSH: 1/4 X 1/8 HEX GALV	1
2	01-261403	NIPPLE, 1/4" X 3", ZINC	1
3	01-411101	HOSE BARB 1/4" x 3/8"	1
4	02-301300	3/8 NUT SERRATED	4
5	03-191005	CONDUIT, LOCKING NUT 1/2"	1
6	03-192520	HEYCO CONN. 3200 1/2"	1
7	05-201002	1/8" BALL VALVE 1/4" BARB	1
8	10-201201	NOZZLE OIL	1
9	10-301250	WATER SEP. FLTR	1
10	F01-0500	VOLTAGE SUPPRESSOR ASSY.	1
11	10-111033	OIL BURNER, AN302 RO-AFG	1

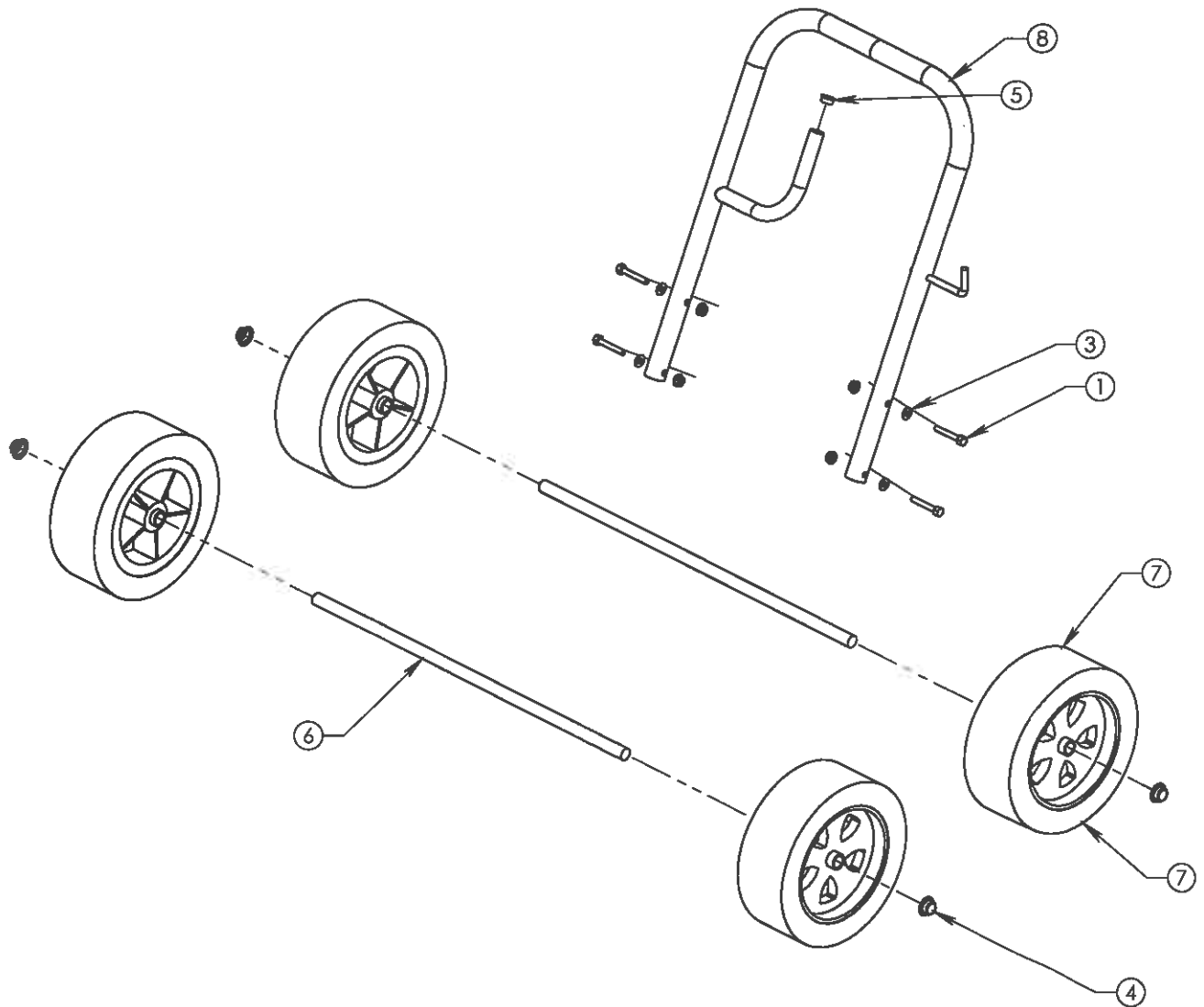


DESCRIPTION:
DESCRIPTION 2: 1 15V WSF
DRAW #: <b>GCF1-1000</b>

REV.	DESCRIPTION	ECR/ECN	DATE	BY
A	01-261403 WAS 01-261602; 10-201201 WAS 10-201305		4/15/2022	BH
	REVISIONS			

DRAWN BY:  
BH  
DATE:  
05/07/2018

ITEM	NUMBER	DESCRIPTION	QTY.
1	02-121600	5/16-18 X 2" CAPSCREW	4
2	02-301200	5/16-18 ZINC SERRATED NUT	4
3	02-501100	WASHER: 1/4", FLAT, ZINC	4
4	02-521203	PUSH CAP NUT 3/4" - AXLE CAP	4
5	03-242004	HOLE PLUG, BLACK PLASTIC	1
6	1104-26	ROUND ROD: 3/4" CR	2
7	12-152000	WHEEL 410x 350x 4" FLAT FREE	4
8	BC4-5016-1	HANDLE WELDMENT	1



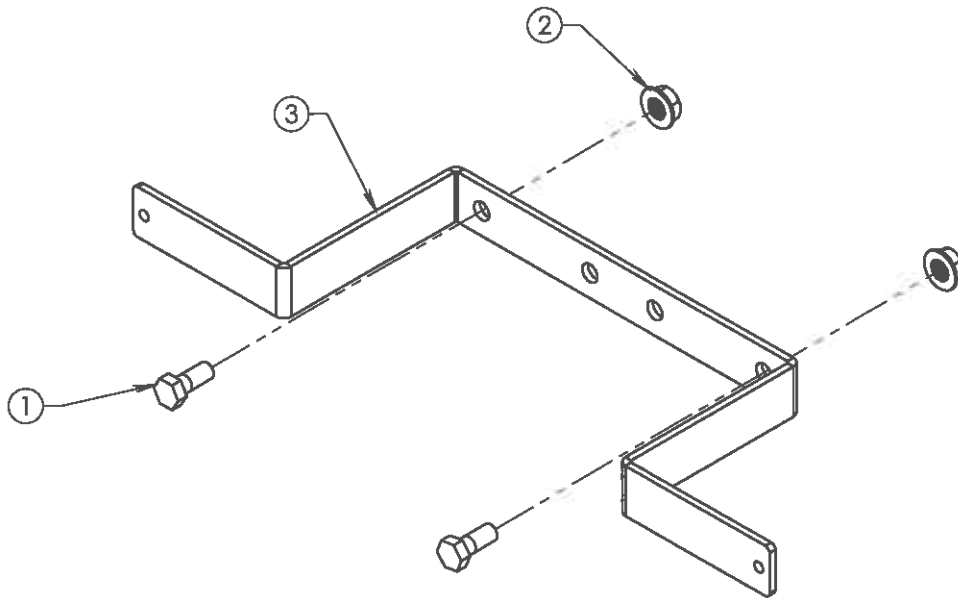
DESCRIPTION:  
JR PORTABILITY KIT

DESCRIPTION 2:

DRAWN BY: BK  
DATE: 7/1/2016  
DRAW #: KC4-4000-1

REV.	DESCRIPTION	ECR/ECN	DATE	BY
A	SHOWING HOSE WRAP MOVED TO OPPOSITE SIDE		4/15/2022	BH
REVISIONS				

ITEM	NUMBER	DESCRIPTION	QTY.
1	02-121100	CAPSCREW: ZINC 5/16 x 3/4	2
2	02-301200	5/16-18 ZINC SERRATED NUT	2
3	B01-2007-1	CORD WRAP, SILVER HAMMER	1



DESCRIPTION:  
CORD WRAP KIT

DESCRIPTION 2:

DRAWN BY:

BH

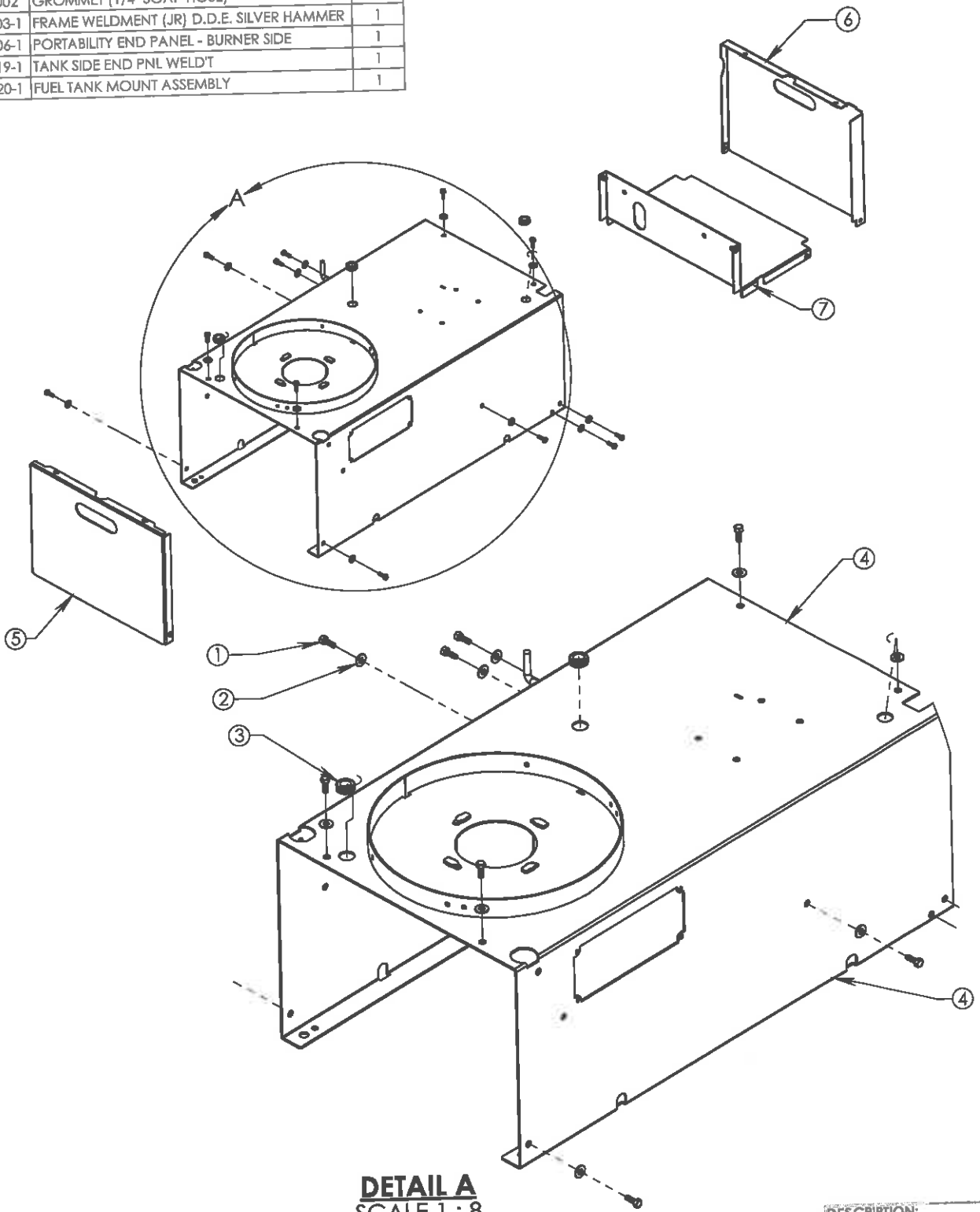
DATE:

2/8/2022

DRAW #:

KCF1-1000

ITEM	NUMBER	DESCRIPTION	QTY.
1	02-111100	CAPSCREW, 1/4-20 x 3/4	12
2	02-501100	WASHER: 1/4", FLAT, ZINC	12
3	03-241002	GROMMET (1/4" SOAP HOSE)	3
4	BC4-4003-1	FRAME WELDMENT (JR) D.D.E. SILVER HAMMER	1
5	BC4-5006-1	PORTABILITY END PANEL - BURNER SIDE	1
6	BC4-5019-1	TANK SIDE END PNL WELDT	1
7	BC4-5020-1	FUEL TANK MOUNT ASSEMBLY	1



**DETAIL A**  
SCALE 1 : 8

DESCRIPTION:  
MACHINE SUB ASS'Y (JR  
PORTABLE) D.D.E.

DESCRIPTION 2:

DRAWN BY: BH

DATE: 2/8/2022

DRAW #:

**XCF1-1000**

SHEET 1 OF 1